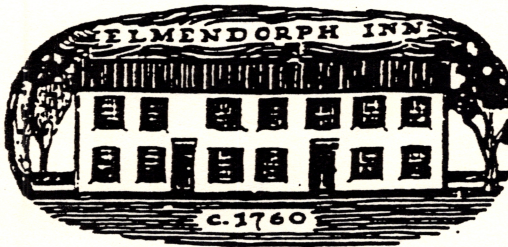


ECHOES

NEWSLETTER

FRIENDS *of* ELMENDORPH

WINTER



2005

PRESIDENT'S MESSAGE

Dear Friends,

Greetings to all for the new year. Many activities have occurred since our last newsletter. Apple pie a-la-mode sales during Hardscrabble Days were quite good under the leadership of Mary Kelly and a hearty thank you to all who baked those great pies and to Stewart's for supplying the ice cream. Then came the yard sales with David Brown, Gussie Townsend, and yours truly twisting arms, grovelling, making offers the public just could not refuse, and did we sell, sell, sell. At the same time Shirley Brown, Richard Coons, Elsa Kreider, Bev Teator, and Betty Franklin were actively selling out of the shop so as to reduce inventories. Then all left-over shop materials were packed in boxes and stacked in the outside storage shed along with shelving, counters, and show cases. Then Nick Annas got the shed professionally moved South about 50 feet for 1/2 the usual service cost. And finally we all waved good-bye to the old concrete block shop building as Phil Seymour personally demolished it with a backhoe. Then the 4 walnut trees were cut down and we were really underway with the new shop carriage barn after all these years of planning and fundraising. Herman Gorgens will provide construction news on the next page. To complete our funding for the new shop project, your organization has benefitted greatly from the generous support of Richard and Carleen Baright, Bill Hammond, Ellen Phalan, David Brown, Herman Gorgens, Kathy Stewart and Carlos Gonzalez. This project has been really sustained by Elmendorph members, local residents, and businesses. A true community involvement.

We are very pleased that board member Madaline Klein has returned following a prolonged illness and a special thanks to Doug Wicks for his legal advice regarding various issues that arose during the funding process.

We then closed up the season with our annual Christmas open house where Ellen Phelan again produced her oven baked breads and the Junior Friends dressed in period clothing and helped serve and provide tours of the Inn. All in all, 2004 was both a very challenging and rewarding year.

Most sincerely,
Larry Thetford, President

Grand Opening Elmendorph Etc. Shop Biennial Summer Auction

It's time to start thinking spring ... and with that the Grand Opening of the new Elmendorph Etc. Shop located in the brand spanking new Carriage Barn! This will be a very exciting time for us all and much anticipated. As spring turns to summer, thoughts of the Biennial Auction will enter our fund raising program mind set. Increasing the stock inventory for the larger shop area and donations to the auction will be critical for our financing program. Here are some win-win ideas on how you can help.

1. Place a card board box {labeled Elmendorph} in an accessible location at home and start filling it up as you discover things you no longer need. Kitchen items, garage stuff, knick knacks, books, etc.
2. Repeat step 1 {over and over} It's surprising how well this works! {win-win}
3. For larger items call "now" for pick ups. We will bring a truck to your location to pick up items. Some larger items we do not carry. Questions? Not sure? Call us at the Inn 758-5887 and leave a message.
4. Keep a look out for relatives/neighbors who are moving. They are generally a good source for shop and auction items. Remember ... tax deductible ... win-win ... free pick ups!
5. "Talk it up!" Tell your neighbors, relatives, friends and keep an eye out for acquisition opportunities. It's surprising how many people are unfamiliar with the Inn's programs and the opportunities afforded by the Inn's shop and Auction.
6. Start a list of items you'd like to donate to the shop/auction, originating from home, work place, etc. Keep the list in an open and accessible location ... fridge, bulletin board, etc.

These are some ideas that work and of course are not all inclusive. Whatever method you choose, remember your help is vital for the financial success of the Elmendorph Inn this year. Thanks for your past support and we hope to hear from you in the near future.

Elmendorph Etc. – Display Acquisitions

This past fall, prior to the start up of the Carriage Barn, we were fortunate to be at the right place, at the right time ... and by amazing chance. Upon our entrance into the Pier 1 Import store in Kingston we found that they were closing/relocating and in the first unannounced hour of selling out of a major portion of their interior display "islands" and shelving along with other display accessories and hardware. We jumped on this buying opportunity and purchased many of the "islands" {mobile wooden display units} with adjustable interior shelves of various sizes as well as other miscellaneous items.

The "islands" will afford the shop crew numerous options on the interior shop arrangements and layouts and the flexibility to rearrange on an as needed basis. Wall panels with horizontal slats and assorted brackets will fill the need for adjustable shelving that can be matched up with sale items. All in all, we feel this will give the shop a great look and at a minimal expense!

A special thanks to the Pier 1 Import management and staff for their generous support, recommendations and help in assisting us with these acquisitions.

Be sure to check out several models at the annual meeting and hear some interesting tails behind the scene that we've experienced over the years re: shop/auction acquisitions.

NEW SHOP / CARRIAGE BARN

Herman Gorgens

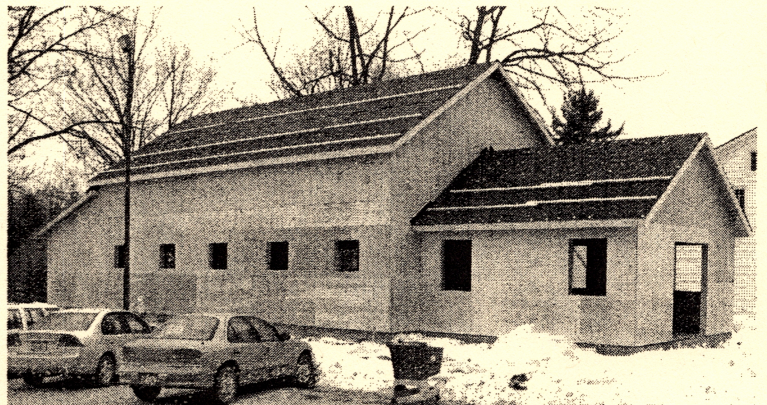
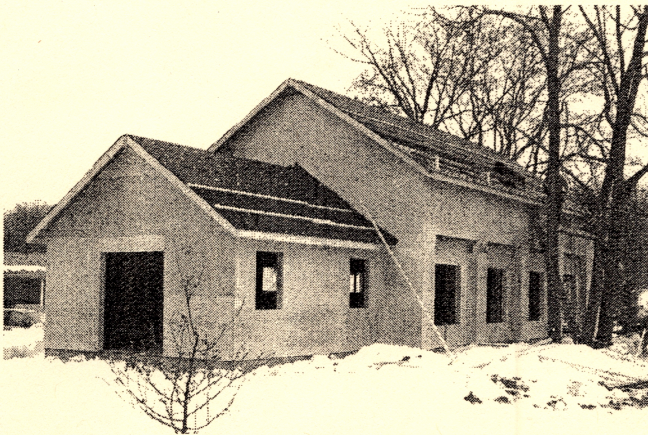
In late November the excavation for the concrete pad commenced followed by a significant amount of gravel fill to bring the site up to grade. Then the pad form was set, plumbing and electric ports established, and a two inch layer of styrofoam for ground insulation was laid on the gravel.

In early January the concrete was poured with a plastic tent erected over the new pad so heat could be applied for proper curing. As the temperature dropped, the pace of construction increased, and soon we were able to experience first-hand the dimensions of a building which, here-to-fore, had been viewed only on paper. Soon after the wall studs were up, the North side was sheathed with plywood and the roof ridge was set. At this time the roof is being covered with cedar shingles. Soon the Board of Directors will be having a meeting to review the options for types of siding versus cost.

Since this has been a community project, we made every effort to keep the contractors local. Herrington Lumber out of Hillsdale, NY has been very supportive with excellent service and very fair pricing on materials. The other contractors are:

Excavating -Nine Yards Construction - Phil Williams
Concrete Work - Ed Bard and Sons
Concrete and Gravel - Stickles Sand and Gravel
Carpentry - P & S Construction
Electric - McCarthy and Sons.
Plumbing - Jerry Smith

Our funding for this project is very close and difficult to budget due to fluctuating material prices. So we are still looking to secure additional contributions. Now that you can see real progress, did deep folks. We surely hope you will appreciate this new building.



THREE GENERATIONS OF KREIDERS CELEBRATE AT THE ELMENDORPH CHRISTMAS OPEN HOUSE

Elsa Kreider, a long-time volunteer in the Elmendorph Etc. Shop and her daughter, Erica Kreider-Mueller, Red Hook High School Language Teacher and Faculty Advisor to the Junior Friends of Elmendorph, are served by Ava Kreider-Mueller dressed in period costume for the Annual Family Christmas Open House. Ava's older sister, Margot, was one of the founders of the Junior Friends of Elmendorph and her grandfather, John Kreider, was for a number of years the treasurer of the Egbert Benson Historical Society which meets at the Elmendorph Inn.



FOE PRESIDENT MEETS WITH JUNIOR FRIENDS

TEXT AND PHOTOS BY BILL HAMMOND

On Dec. 22nd, Larry Thetford presented an update on the construction of the new Elmendorph Shop building to the Junior Friends at the Red Hook High School. Director Bill Hammond accompanied Larry, and Jr. Friends advisor, teacher Mrs. Kreider-Mueller was also in attendance.

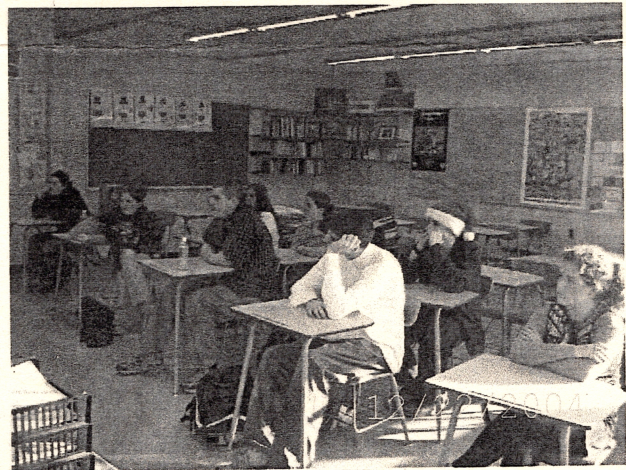
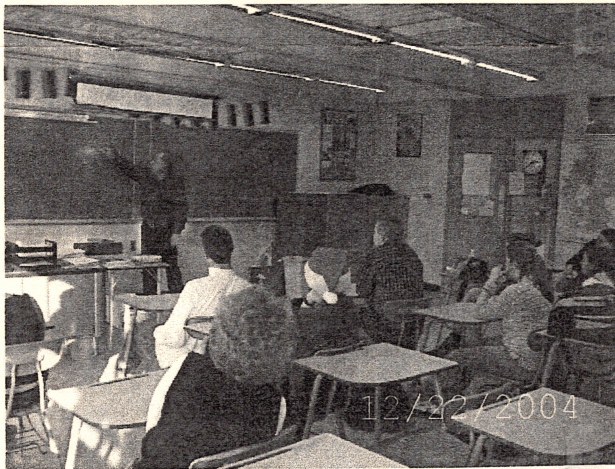
Larry started the talk by posing a question to the students: "How would you start the process of constructing a new building?". With group participation, Larry unfolded the the entire process of designing, planning, funding, and constructing our new "carriage barn shop". Be sure to drive by soon and see the great progress being made by Herman Gorgens and his band of contractors).

We also brought a box of artifacts from the archaeological digs that preceded the construction. The digs were necessary because the Elmendorph is on the National Register of Historic Places. That part of the process was very demanding, and Larry played a major role, working right along with the archaeologist. The students studied the artifacts at the end of the presentation.

We were complimented on the talk by Mrs. Kreider-Mueller and she expressed appreciation in the way that the students were involved. Larry and I, and the rest of the board, want to take this opportunity to thank her and especially the student members of the Junior Friends for their much appreciated efforts supporting the Elmendorph. They recently assisted at the Christmas Open House, some in their period costumes, some serving refreshments, and some helping VP Ellen Phelan with her beehive oven baking.

You may also recall that the Junior Friends ran a fund-raiser for the new shop and a few years ago also purchased the historical marker sign that is now installed in front of the Inn.

We intend to strengthen our relationship with the Junior Friends and hope they will continue to be a prostrive force in our efforts to make the Elmendorph Inn a meaningfull resource for the Red Hook community.





FRIENDS OF ELMENDORPH, INC. ANNUAL MEETING & DINNER



The ANNUAL MEETING OF THE FRIENDS OF ELMENDORPH, INC. will be held on Monday, March 21, 2005 at the Elmdorph Inn, North Broadway, Red Hook, NY. The meeting will be preceded by crackers, cheese, and punch at 6:15 PM, followed by dinner at 6:45 PM.

Please send your proxy and / or dinner reservations to Carol Annas, 51 Aspinwall Rd., Red Hook, NY 12571 (845) 758-8154. All reservations MUST be made by March 16, 2005. You may choose to attend the annual meeting and program without attending the dinner. Please let us know so we can arrange seating for you. **Please make checks payable to RENNERS.**

The speaker for the evening will be Jack Kelly on the "HISTORY OF GUNPOWDER" a subject about which Jack has written a book. He lives on Spring Lake Road between Red Hook and Elizaville and will relate some of the early sites of gunpowder manufacture in the Mid-Hudson Valley.

NOW MAY BE THE TIME TO RENEW YOUR MEMBERSHIP FOR 2005. PLEASE CHECK THE DATE ON YOUR MAILING LABEL. YOUR MEMBERSHIP RENEWAL IS DUE IN THE YEAR SHOWN ON THE LABEL. AN ENVELOPE IS ENCLOSED FOR YOUR CONVENIENCE

-----PROXY-----

(For 3/21/05)

I will **NOT** attend the ANNUAL MEETING OF THE FRIENDS OF ELMENDORPH. In my absence, I hereby appoint the President or his/her deputy or _____ to act as my proxy to vote on matters that come before the membership on March 21, 2005.

Signature _____ Date _____

Signature _____ Date _____

-----DINNER RESERVATIONS-----

\$16.00 Per Person
March 21, 2005

MENU

Rolls and Butter
Grilled Porkchops w Red Wine Sauce
Smoked Chicken Thighs and Legs

Baked Macaroni and Cheese with Tomato
Country Style Sweet & Sour Green Beans
Maple Pecan Cream Cheese Cups
Coffee and Tea Service

Name _____ Amount enclosed _____

Name _____

Please send your proxy/reservations to CAROL ANNAS, 51 ASPINWALL ROAD, RED HOOK, NY 12571

Please make checks payable to RENNERS

"THANK YOU" FOR THESE RECENT CARRIAGE BARN DONATIONS
(Some people have donated twice – we love and appreciate that!)

Dr. & Mrs. Kenneth Appell
William & Louise Arsenault
Marlene & John Barr
Frank Bauer
The Behoriam Family
Bob & Barbara Bielenberg
Cathrine Brody
Cindi Cole
Rose & Louis Dondero
John Douglas
Egbert Benson Historical Society
Laurie & Stephen Fay
Suzanne Gold
Geoffrey Goldman
Clifford & Eileen Gubler
Dr. & Mrs. Barry Gurland
Roger & Laurie Husted

Richard Jones
Pierre & Rosie Levai
Roy Edward Lush
James Monahan & Kim Barke
Evelyn O'Brien
Ellen & Sam Phelan
Mr. & Mrs. Charles Rider
Peter & Judy Riley
Evelyn Rivero
Carolyn & Arthur Ryan
Andree & Richard Spark-DePass
Carol Sprague
Richard & Karen Streifeneder
Yuichi & Jenny Tanabe
Henry & Linda Webster
White Rabbit Coffee House
Bethany Winham

OTHER DONATIONS – "THANK YOU"

Shirley Brown in memory of Patricia Kelly
Louis & Mildred Hubach
Vincent Mateo
Maryann Moul

NEW MEMBERS

Beth & Mike Pascarella

PLEASE NOTE: With respect for the rights and convenience of the IGA shopper, please observe the parking signs at any Elmenndorph event. You are requested to park in the George Cole Auction parking lot just North of the IGA.

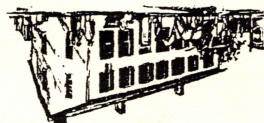
Inkkeeper Bob Bielenberg

CALL TO ACTION!
It is time to renew your membership by using the envelope inside.

BOARD of DIRECTORS
President Larry Thetford
Vice President Ellen Phelan
Secretary Franca Cooper
Treasurer David Brown
Director Herman Gorgens
Director Bill Hammond
Director Madeline Klein
Director Mary Kelly

CHANGE SERVICE REQUESTED

FRIENDS of ELMENDORPH, INC.
POST OFFICE BOX 44
RED HOOK, NEW YORK 12571-0044



Non-Profit Org.
US Postage
PAID
Permit No. 7136
Newburgh, NY