

## HUDSON RIVER HERITAGE BOARD OF DIRECTORS

WARREN TEMPLE SMITH, **PRESIDENT**  
FRANK J. CUTOLO, **VICE PRESIDENT**

ALBERT GNIDICA  
ARVIA MORRIS  
DAVID BYARS

**EXECUTIVE DIRECTOR**  
SUNNY WIRTH

HUDSON RIVER HERITAGE IS A NOT-FOR-PROFIT MEMBERSHIP ORGANIZATION COMMITTED TO PRESERVING THE UNIQUE CHARACTER OF THE MID-HUDSON VALLEY'S HISTORIC ARCHITECTURE, RURAL LANDSCAPES AND SCENIC VIEWSHEDS THROUGH ADVOCACY AND EDUCATION. HUDSON RIVER HERITAGE IS THE FEDERALLY DESIGNATED STEWARD OF THE HUDSON RIVER NATIONAL HISTORIC DISTRICT.

---

### SAVE THE DATE!

JOIN US FOR OUR 22<sup>ND</sup> ANNUAL COUNTRY SEATS TOUR  
"EXEMPLARS OF HUDSON VALLEY ARCHITECTURE"  
SATURDAY, OCTOBER 16, 2010



P. O. BOX 287  
RHINEBECK, NY 12572  
(845) 876-2474  
E-MAIL: [office@hudsonriverheritage.org](mailto:office@hudsonriverheritage.org)  
[www.hudsonriverheritage.org](http://www.hudsonriverheritage.org)

HUDSON RIVER HERITAGE

PRESENTS

AN EVENING OF COLE PORTER

AT

## EDGEWATER



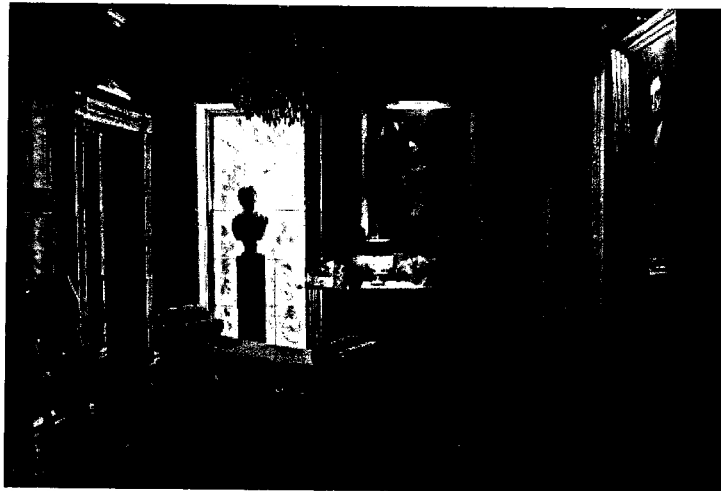
BARRYTOWN, NEW YORK  
SATURDAY, JULY 24, 2010  
5:30 PM TO 8:30 PM

1200. 24. 3

HUDSON RIVER HERITAGE EXPRESSES ITS GRATITUDE TO OUR BENEFIT  
COMMITTEE AND SPONSORS FOR THEIR GENEROUS SUPPORT

## EDGEWATER

A CIRCA 1824 CLASSICAL REVIVAL MANSION, EDGEWATER  
WAS BUILT ON LAND GIVEN BY JOHN R. LIVINGSTON TO  
HIS DAUGHTER, MARGARET, AFTER HER MARRIAGE TO CAPTAIN  
LOWNDES BROWN OF CHARLESTON, SOUTH CAROLINA.  
ONCE OWNED BY GORE VIDAL, TODAY IT IS THE HOME OF  
RICHARD HAMPTON JENRETTE, WHO HAS EXQUISITELY RESTORED  
IT TO THE GRANDEUR OF A PREVIOUS ERA, THAT OF ITS  
SECOND OWNERS, ROBERT DONALDSON (1800-1872)  
AND HIS WIFE, SUSAN GASTON DONALDSON (1808-1866).  
MANY OF EDGEWATER'S ORIGINAL FURNISHINGS  
AND ARTIFACTS HAVE BEEN PAINSTAKINGLY RETRIEVED AND  
RETURNED HOME. DUNCAN PHYFE AND GILBERT  
STUART ARE WELL-REPRESENTED IN THE FURNITURE  
AND PORTRAITURE ON DISPLAY.



### HERITAGE FELLOWS

J. WINTHROP ALDRICH AND TRACIE ROZHON  
PHEBE AND GEORGE BANTA  
INES ELSKOP AND CHRIS SCHOLZ  
MICHAEL LEVA  
ARVIA AND WILLIAM MORRIS

### HERITAGE FRIENDS

ANNON AND JON ADAMS	VIRGINIA H. SIBBISON
RONALD AND BETSY ATKINS	GREGORY STANFORD
IRMA BECKLEY	WARD AND LINDA STANLEY
EVIE CHANLER	GLADYS R. THOMAS
MARTIN DAVIDSON AND VIRGINIA MARTIN	STEPHEN TILLY ARCHITECTS INC.
JONATHAN GREENBURG AND ELIZABETH ELY	ILLIANA VAN MEETEREN AND TERENCE BOYLAN
JOHN K. HOWAT	DUANE AND LINDA WATSON
FREDERICK AND ANNE OSBORN	LISA AND GORDON WEISS

### SPONSORS

ADAMS FAIRACRE FARMS	THE MELTZER GROUP &
BLUECASHEW	MORGAN STANLEY SMITH BARNEY
COPY HUT	NORTHERN DUTCHESS PHARMACY
PATRICIA M. CURTHOYS, CPA	OLD MILL WINE & SPIRITS
DOWDEN AGENCY INC.	PAPER TRAIL
GREENSPACE DESIGN, LLC	THE RHINEBECK ARTISTS' SHOP
HALDORA	RIVER RIDGE AT HYDE PARK
HAMMERTOWN RHINEBECK	SUMMER MOON/WINTER SUN
H. H. HILL	THE STOP & SHOP SUPERMARKET OF RHINEBECK
INTEGRITY LAND SERVICES, LLC	HERMAN H. TIETJEN, ESQ.
JOOVAY	WARREN TEMPLE SMITH ARCHITECTS, LLC
TINA KEIL, BELLA FIORI	WILLIAMS LUMBER AND HOME CENTERS
BARBARA B. MARKELL, CFP	

MUSIC BY BLUE GARDENIA  
FOOD SERVICE CATERED BY LOLA'S CAFE