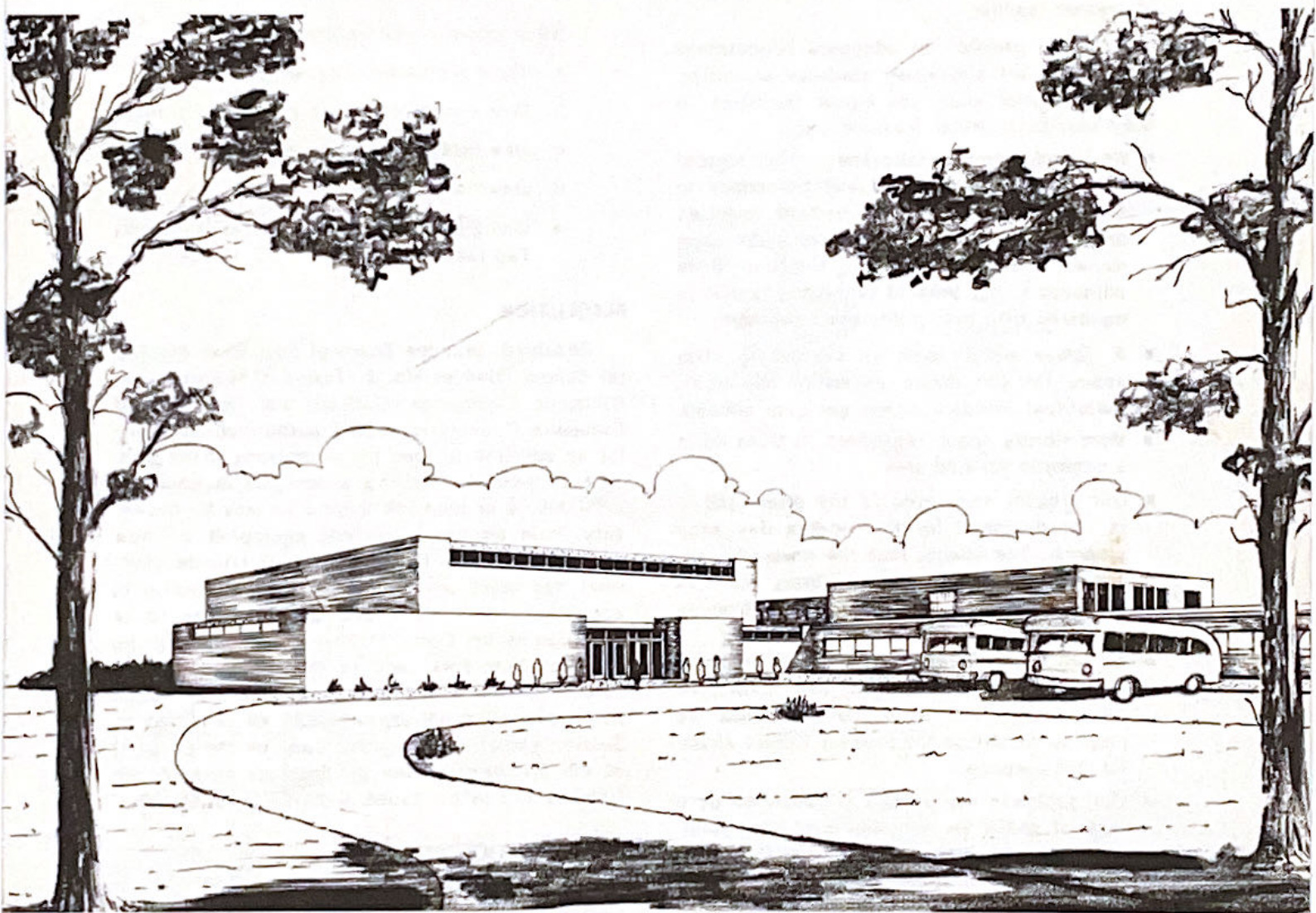


**APPROVAL OF THIS ADDITION  
WILL PROVIDE  
YOUR CHILDREN  
WITH MODERN & ESSENTIAL EDUCATIONAL FACILITIES**



**VOTE FOR THE FUTURE OF YOUR CHILDREN**

**Tuesday, March 21, 1967**

**GERMANTOWN CENTRAL SCHOOL**

**2:00 TO 8:00 P.M.**



# WHY DO WE NEED AN ADDITION TO OUR PRESENT FACILITIES?

1. Our present first grades are housed in the Reformed Church. These students need a continuous program which can only be offered in a building which is designed for the total elementary program.
2. We only offer a half day kindergarten program. The kindergarten program, as recommended, is so broad and challenging; we cannot offer this recommended program in a half a day. The increase in state aid obtained by having a full day program would more than offset the cost of another teacher.
3. In order to provide an adequate educational program for all secondary students according to their needs, more and better facilities in some curricular areas are necessary.
  - We need another laboratory. The logical location is near the present laboratory to eliminate duplication of certain supplies and equipment. The Home Economics room makes a perfect location, because it is adjacent to our present laboratory and it is equipped with gas, water and sewerage.
  - A larger music room is needed to offer space for the entire ensemble rehearsal. Individual practice rooms are also needed.
  - More library space is needed. It must be in a centrally located area.
  - Our present shop area is too small and it is not designed for the modern day shop program. The space, that the shop now occupies, is just right for the library and it is centrally located. Therefore, a new shop is recommended.
  - We are trying to offer a broad Art program. Only a visit to this room will show how desperately more art space is needed. We propose to utilize the present library space for this purpose.
  - Our business department is hampered by a lack of space for new and modern equipment. The present Art room will be incorporated into the business room to offer space to safely house this equipment.
  - We are finding it more difficult to schedule a lunch program in our present facility. The plans are to incorporate the present fifth grade classroom into the existing cafeteria and move the 5th grade into the present music room.
  - We need an auditorium to encourage vocal expression early in the elementary school. We are sure that all of us would be more

free to express ourselves in public if we receive better training in school.

- The State Education Department demands at least one physical education station for the elementary school and one for the secondary school. Our present facilities do not permit the recommended full Physical Education program for boys and girls.

Therefore,

## DESCRIPTION OF THE PROPOSED ADDITION

1. We propose to build eight classrooms.
  - a. Three elementary classrooms.
  - b. One music room with practice stations.
  - c. One Industrial Arts room.
  - d. One Home Economics room.
  - e. One gymnasium with a divider to provide two teaching rooms.

## RESOLUTION

Resolved, that the Board of Education of Central School District No. 2, Towns of Germantown, Clermont, Livingston, Gallatin and Taghkanic of Columbia County, is hereby authorized to spend for an addition to, and for alterations of the present school building a sum not to exceed \$700,000.00 or so much thereof as may be necessary, said amount to include equipping the new addition, grading, landscaping and site development and other incidental expenses therewith in accordance with plans and specifications to be approved by the Commissioner of Education of the State of New York, and to levy a tax upon the taxable property in said School District to be collected in annual installments as provided by Section 416 of the Education Law, for the payment of the principal of and the interest on such obligation as may be issued by said School District.

## QUALIFICATION OF VOTERS

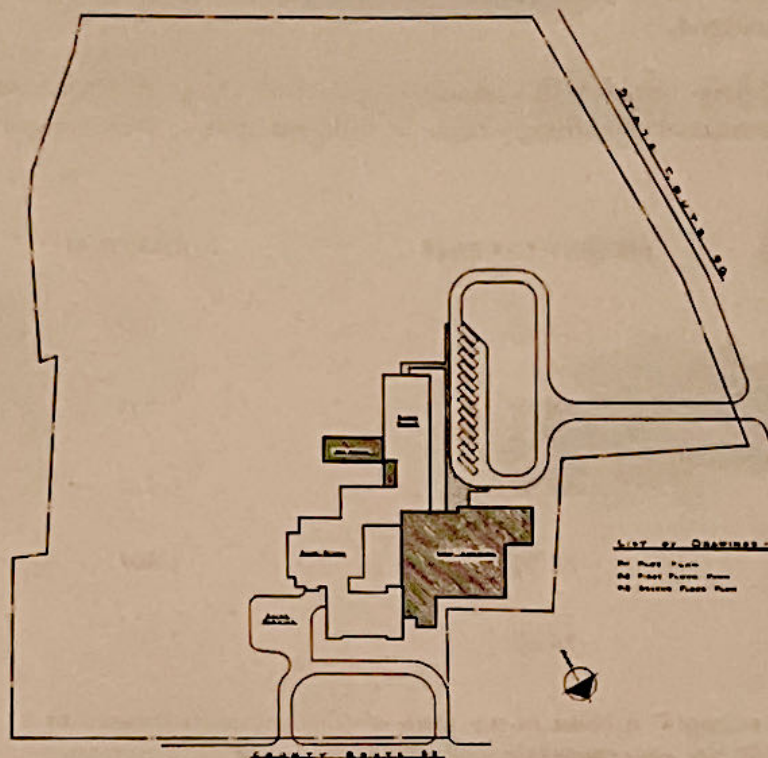
1. A citizen of the United States.
2. Twenty-one years of age.
3. A resident within the school district for a period of 30 days next preceding the meeting at which he offers to vote.
4. In addition passes one of the following three qualifications:
  - a. Owns or is the spouse of an owner, leases, hires, or is in possession under a contract of purchase of, real property in such district liable to taxation for school purposes.



b. Is the parent of a child or children of school age, provided such child shall have attended in the district school in which the meeting is held for a period of at least eight weeks during the year preceding such school meeting.

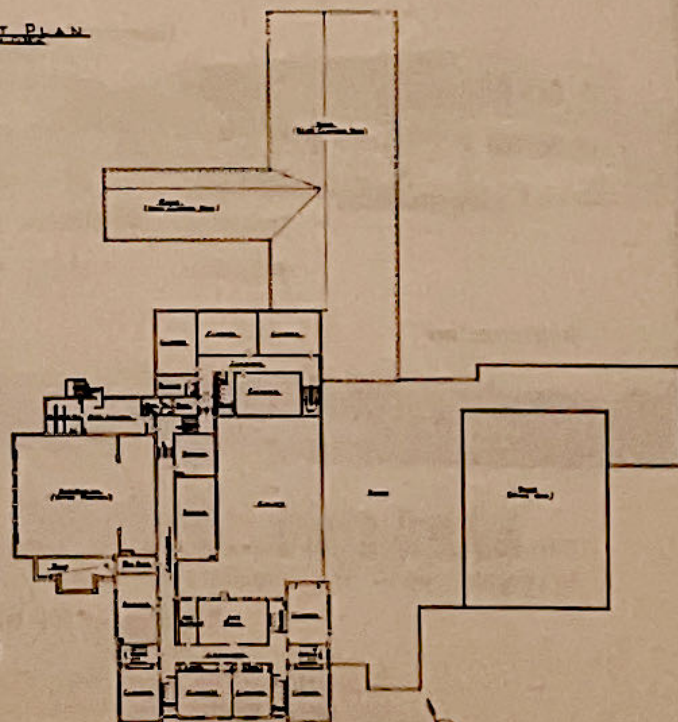
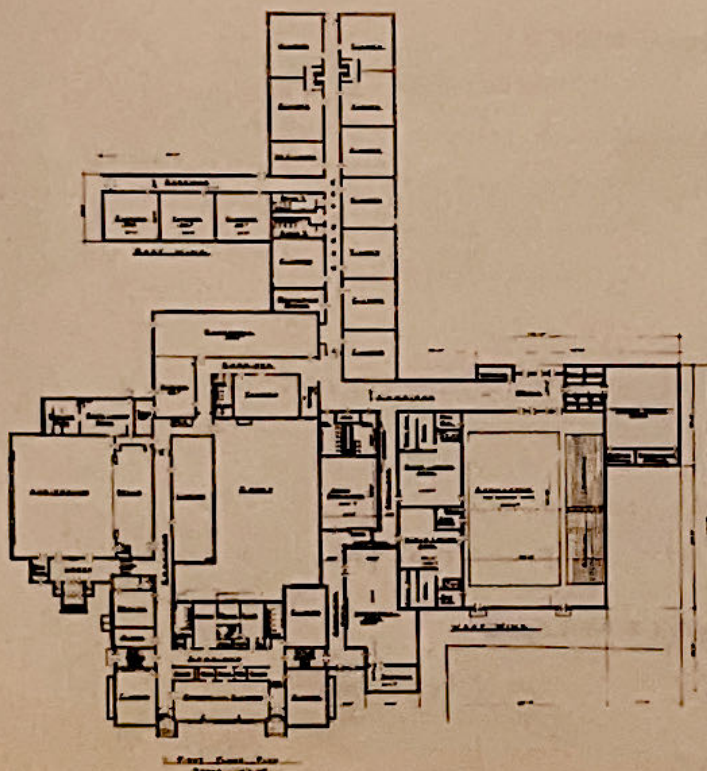
c. Not being the parent, has permanently residing with him or her, a child who has attended school for a period of at least eight weeks during the year preceding such meeting. (Only the head of the household may vote.)

# ADDITIONS TO GERMANTOWN CENTRAL SCHOOL



LIST OF DRAWINGS -  
No. 1000 - Plan  
No. 1001 - Plan  
No. 1002 - Plan

## PLAN OF



LUX AND QUACKENBUSH  
ARCHITECTS

1

2

3

4

5

6	7	8	9
10	11	12	13
14	15	16	17
18	19	20	21
22	23	24	25
26	27	28	29

30

31	32	33
34	35	36
37	38	39
40	41	42
43	44	45
46	47	48

49

50

51