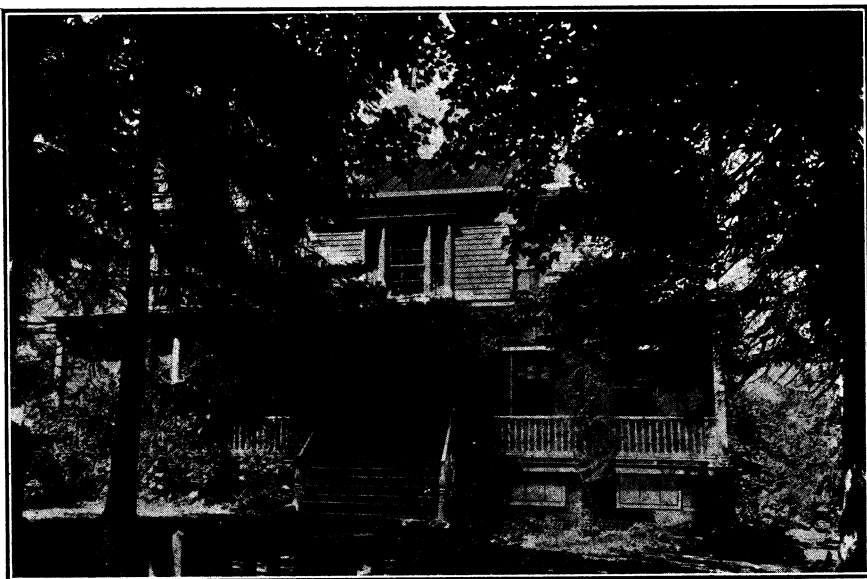


*W.H.B.  
This may  
interest you better, it  
doesn't interest me. L.H.*

## THIS PALATIAL ESTATE FOR SALE



### “COLLDONGAN” MILTON, \_\_\_\_\_ NEW YORK

Few people realize the beauties of the West Side of the Hudson Valley. Few realize that the most wonderful fruit belt in the Eastern States nestles between the Hudson and the Marlborough Mountains from Newburgh to Highland, opposite Poughkeepsie. I believe this to be the only fruit belt in the Country producing strawberries, raspberries, gooseberries, blackberries, currants, cherries, plums, peaches, pears, apples and grapes, in commercial quantities. If one crop fails there are always others left to fall back upon.

The climate is mountain without the elevation, lacking the depressing humidity of the coast.

In the heart of this district one and a half miles west from Milton Station, 68 miles from New York, at an elevation of 500 feet is Colldongan (from Col. Dongan, Governor of New York, the first owner) generally conceded to be the best farm in the township. Two hundred and thirty-two acres of which only about four are in woods. Balance all tillable.

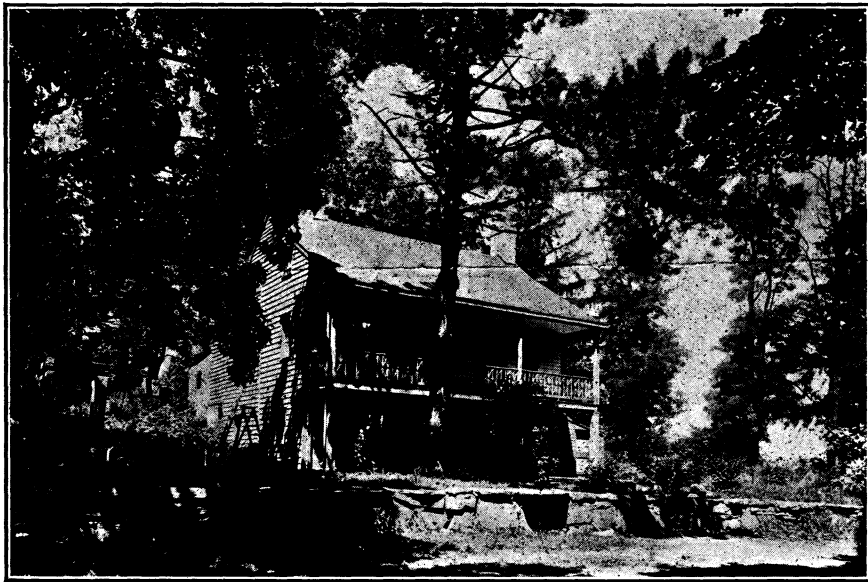
Six apple orchards bearing. 6,000 peach trees one to six years old. 750 young apples started. 300 young pears. 1,000 bartlett, seckle and other pears bearing. 1½ acres in strawberries. 40,000 currants set in the past five years, two-thirds in full bearing now. Three vineyards. 2,000 young raspberries. Cherries.

400 English walnuts started. 200 black walnuts. Every indication with these young trees now is that they will do well here. If so they will be the most valuable on the farm.

Hay meadows and pastures. Pond that cuts 100 tons of ice at eight inches.

BUILDINGS are all of extra heavy oak timbers firmly braced. This construction must be seen to be appreciated. All buildings painted 1914.

Main House, stone foundation, seven brick chimneys, five open fireplaces, two of them with imported Italian marble mantles, twenty-five rooms counting cellars. Simple, dignified northern colonial style. Vacuum heating system. Interior newly decorated 1913. Outside 1914.



SUPERINTENDENT'S HOUSE

Closely surrounded with large spruce, maples and elms, giving shade in summer and protection in winter.

Garage for two cars, with 120 gal. gas tank and pump, and carriage house with four room tenant quarters above.

Four tenant houses, one with three rooms and attic, one with five rooms, one with six, one with nine rooms and attic.

Large new pickers quarters for forty pickers if needed.

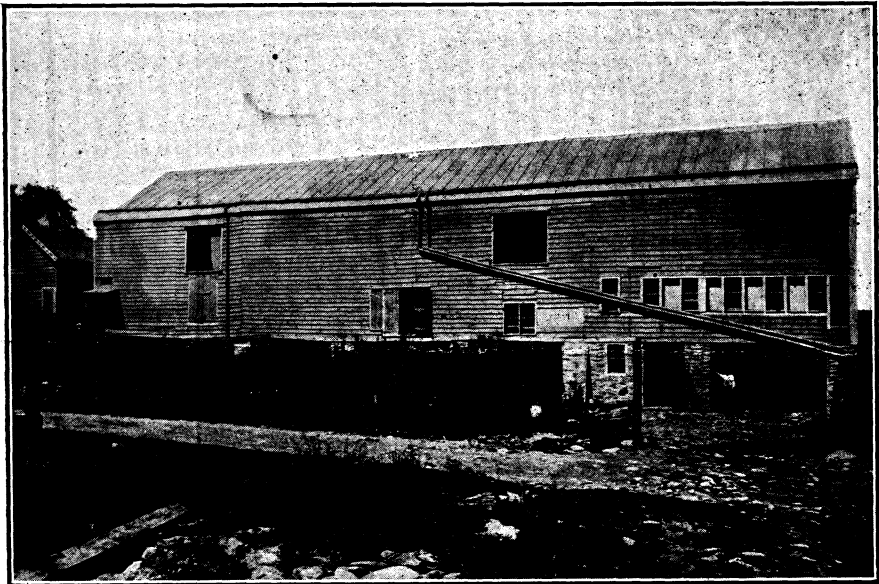
One barn 107 x 38 feet, new iron roof and new foundation piers.

One barn 90 x 40 feet, iron roof and good storage cellar in which apples have been kept from fall until July 1st.

Sheds, granaries, ice-house, etc.

Blacksmith shop fully furnished with tools. Fairbank's scale inspected and sealed.

Three gasoline spray outfits, one used only three days to date. Gas engine on wheels for sawing and thrashing. Rye and oat cylinders, reaper, two mowers, tedder, rakes, hay loader, manure spreader, wagons, harness, and implements of all kinds needed. Also ice tools.



CATTLE BARN

Six horses, six or eight cows, chickens.

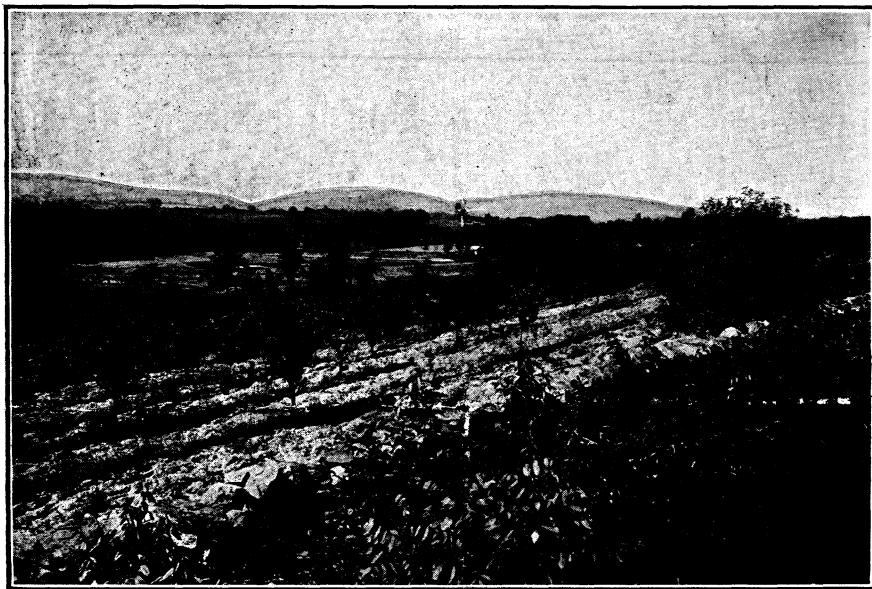
This farm will be sold fully equipped with everything needed for continued operation. This is a very unusual fact.

The buildings have been recently appraised by the Equitable Appraisal Co. of New York, at nearly \$35,000. for insurance purposes.

The West Shore R. R. to Milton, the N. Y. Central to Poughkeepsie, which is four miles via Highland Ferry, the Central New England at Highland, and River boats give Colldongan exceptional transportation facilities.

The main east and west turnpike runs through the farm. This road has been stoned to the farm. State road north and south through the village. Farm is within easy motoring distance of Lake Mohonk and the Catskill Mountains which lie in this same County of Ulster.

This is the ideal place for any man wanting a fine business farm, and beautiful colonial home designed by one of the best architects of his time.



## ONE OF THE YOUNG ORCHARDS

The record crop of peaches from this farm sold for \$17,000. This can be done again when the trees come on. All the hay needed for stock kept with a generous surplus is raised on the farm. And the stock now here furnishes all the manure needed. Grain is raised as rotation advises.

It is very seldom that one finds such a well appointed, self sustaining and money making property for sale.

For further particulars apply to

[REDACTED],  
[REDACTED], [REDACTED]