



DELIGHT'S HOT SPA
 RV / TRAILER COURT
 & COTTAGES
 "Natures Fountain of Health"
 Hot Mineral Baths
ADULTS 21 to 101



P.O. BOX 368
 Tecopa, Ca. 92389

WELCOME

(760) 852-4343

DELIGHT'S HOT SPA offers you a wide selection of accomodations and services
 As our guest you are welcome to use our Private Hot Pools, Sun Deck, Large
 Recreation Room, the Patio & Receation Area. NO PETS ALLOWED IN PATIO AREAS.

All our Houskeeping Units and Cottages include combination bedroom-living
 room with twin or double bed and Kitchenettes. We supply all linens but we
 do suggest that you bring your own beach towels and maybe a bathrobe to
 wear back to your cottage from the baths.

Our Rates for 1 or 2 Persons are as follows and could change without notice.

Refrigerated Air

RATES PER DAY-PLUS 9% room
 tax

	<u>1 DAY</u>	<u>WEEKLY</u>	<u>5 WEEKS NO TAX</u>
Dbl & Twin Housekeeping Cottage =	\$28:00	\$140:00	\$700:00
Dbl & Twin Housekeeping Unit =-	\$28.00	\$140.00	\$700.00
XL Housekeeping Cottage -	\$40.00	\$200.00	\$1000.00

There is an additional charge of \$10.00 per day for a third person.

CHECK OUT TIME: 11:00 A.M.

RV Spaces are also available. The rates below include Full Hook-up, plus
 use of the Hot Mineral Pools, Clean Rest Rooms and Showers.

Daily- \$12.00 Weekly- \$70.00 Monthly- \$175.00

Additional Charge of \$4.00 per day for a third person.

Please make your reservation early so you can be sure of having accomoda-
 tions. A deposit to cover one night's lodging will guarantee a reservation
 until 5:00 p.m. Deposits on cancelled reservations are not refundable.



PLEASE NO CHILDREN ALLOWED

21 to 101

thank you!

A B C D E F G

25	26
24	27
23	28
22	29
21	30

Storage

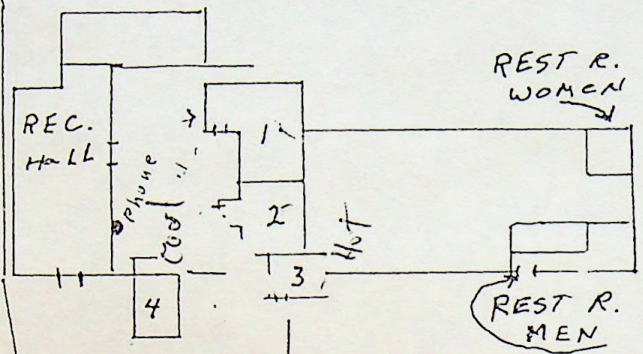
15	16
14	17
13	18
12	19
11	20

REST ROOMS

31
32
33
34
35
36
37
38
39
40
41

DUCK POND

	6
4	7
3	8
2	9
L	10
M	
N	



PARKING

11
10
9

1

3

5

S T U V W

WELL

2

4

6

FFICE

NIGHT OFFICE

Just a few rules so we can all get along

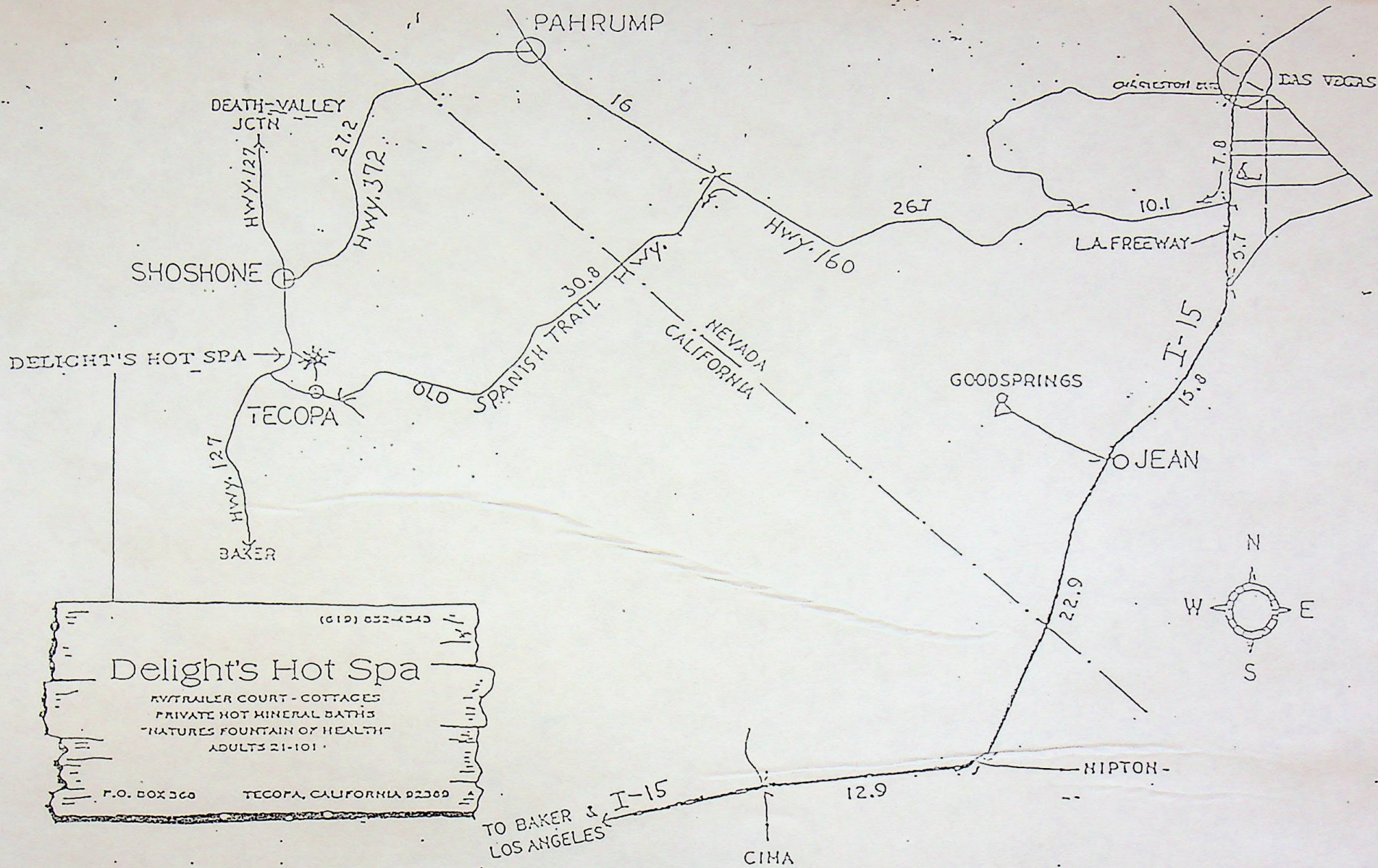
1. 5 MPH in park
2. No loud music
3. All pets on a leash
4. Clean up after your pet
5. No children allowed unless approved by office
6. No tents
7. Park in designated areas
8. No pets within 50 Ft. of baths
9. No campfires unless approved by office
10. Please let the office know of any visitors
11. Check out time is 11:00 AM.
12. Mail will go out and be picked up after 1:00. Please pick mail up at the office.
13. If you have grease or any heavy amount of dirt, please use the showers in RV. park. Not in the baths
14. Please do not take anything that is not yours

SPA RULES

1. No Smoking
2. No eating or drinking
3. No-Children
4. No soap
5. No clothes
6. No pets
7. Please shower before entering the baths
8. 20 MIN. Only, People might be waiting
9. The baths close at 9:00 PM. Please do not argue with the tub cleaner he is only doing his job

THANK YOU





DELIGHT'S HOT SPA one of the private resorts, furnished their U.S. Government analysis of the mineral content of their spring water. Following are the parts per million:

Calcium	7.2	Carbonates	45.2	Iron	0.094
Magnesium	9.7	Bicarbonates	668.0	Boron	9.2
Sodium	725.0	Sulphates	497.5	Flouride	2.4
Potassium	22.3	Chlorides	371.0	Arsenic	0.24

The total solids being 2345.0 parts per million

2025.30.14