

1928

MARCH, 1928

BETHEL COMPANION

VOL. XXVIII. ROCK ISLAND, ILL., AND CHICAGO, ILL.

No. 3



He Is Risen

Bethel Lutheran Church
Cor. 62nd and Peoria Streets
GILBERT C. BENGTON

Telephone Wentworth 2173

Parsonage 6206 Peoria St.

N. M. Bengtson
6321 S. Bishop St.
Chicago, Ill.

Suits Hats and Shirts	Om Jag är svensk? Jo visst Jo! De bästa och finaste Kläder för <i>Her- rar</i> och <i>Gossar</i> finns ju här. Hattar Skjortor o. s. v. Äro vi bekanta? Ja, säkert! Manskostymer fr. \$15.00 till \$60.00 E. JOHNSON & CO. 6128—6130 So. Halsted Street, Chicago, Ill. Phone Wentworth 1635.	The House that always makes good
---	---	--

BETHEL-FÖRSAMLINGENS

Sjuk- och Begravningshjälpförening,
 organiserad 1900, sammanträder i Bethel-kyrkan,
 62 och Peoria-gatorna, fjärde onsdagen i varje
 månad kl. 8 e. m.

Sjukhjälp betalas för tretton veckor under
 året, halv ersättning för första veckan. Avgiften
 är 50 cents i månaden för \$7.00 i veckan. Vid
 dödsfall utbetalas ett extra assessment å \$1.00.

För vidare upplysningar om denna billiga för-
 ening (varest både man och kvinna, så inom
 som utom församlingen stående, från 18 till 50
 år, kan få tillhöra) besök eller tillskriv:

Claus Johnson, ordförande, 7714 Ridgeland ave.
 A. F. Ehrenström, v. ordf., 8232 So. Carpenter st.
 Einar Carlson, finanssekr., 1657 W. 92 st.
 Carl Herder, protokollssekr., 6738 Lowe ave.
 Chas. Burgeson, kassör, 7208 So. Morgan st.

BUSINESS Phone Fairfax 6644	RES. Phone Saginaw 4323
MAYNARD L. NELSON Insurance - All Kinds	
301 Woodlawn Bank Bldg. 1180 E. 63rd St.	

Phone Normal 4515

Dr. A. J. Hanson

DENTIST

 United State Bank Bldg. Chicago
 S. W. Cor. 60th & Halsted Sts.

We Recommend
EDLUND'S RHEUMATIC REMEDY
 KIDNEY REMEDY
 IRON TONIC
 STOMACH REMEDY

E. A. EDLUND
 SVENSKT APOTEK

N. E. Corner 61st and Halsted Streets

Phone Wentworth 1698

Chas. Kohlmann

Successor to

A. Jacobeit
GROCERY and MARKET
 Homemade sausage and corned Beef
 a Specialty

6200 S. MORGAN STREET

Phones—CHESTERFIELD 0220--0316

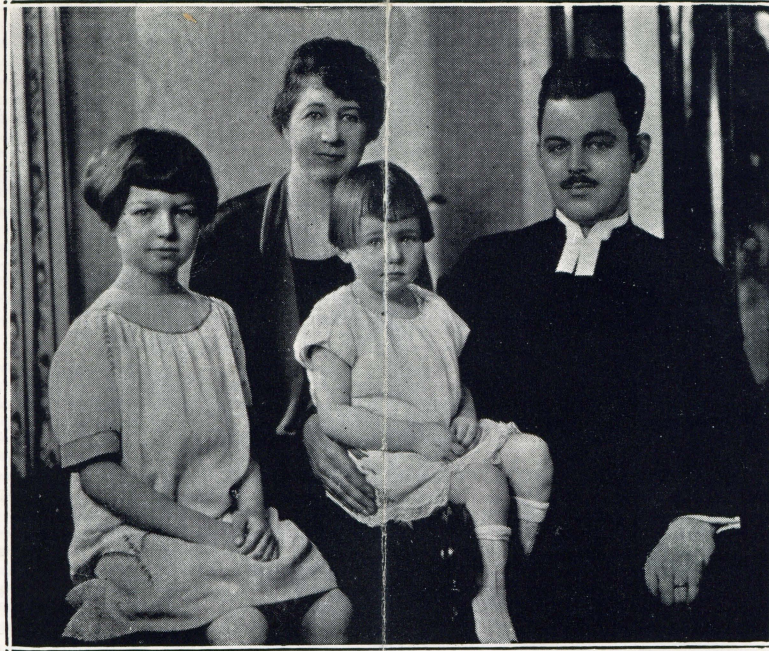
SOUTHFIELD OIL & SUPPLY COMPANY

SUCCESSOR TO OSCAR LARSON & SON

 Wholesale and Retail
COAL, GASOLINE AND OIL

 Service Station—Office—Yard
9100 SOUTH PARK AVENUE
CARTAGE
MOVING

1928



Rev. C. Emil Bergquist and Family

March 21, 1928

DEAR BETHEL MEMBER :

We are glad to inform you that our new pastor, Rev. C. Emil Bergquist will arrive in Chicago next week and a reception has been planned in his honor.

This reception will take place in Bethel Lutheran Church, 62nd and Peoria Streets on March 30th at 8:00 P.M. There will be a short but excellent program and refreshments.

A delightful evening is assured and you will be pleased to meet and welcome our new pastor and family.

As you doubtless know Rev. Bergquist is moving his family from Minneapolis and is being put to considerable personal expense in accepting our call.

It is therefore the suggestion of the Board of Administration to present him on this occasion with a free-will offering to help defray at least a part of his expenses.

During the past few months the Congregation has come to admire Student Gilbert C. Bengtson, and as he leaves us at this time, to continue his education, it is fitting that we should show our appreciation of his faithful service to us, by the presentation of an appropriate gift.

Any contribution you can conveniently make will be very acceptable and may be made to the Church Treasurer, Albert Marker, 8101 S. Marshfield Avenue, or to any board member.

Please designate how your contribution shall be divided.

Yours in the Lord's Service

*Don't Forget
The Date*
March 30th
8:00 p. m.

Board of Administration
BETHEL LUTHERAN CHURCH

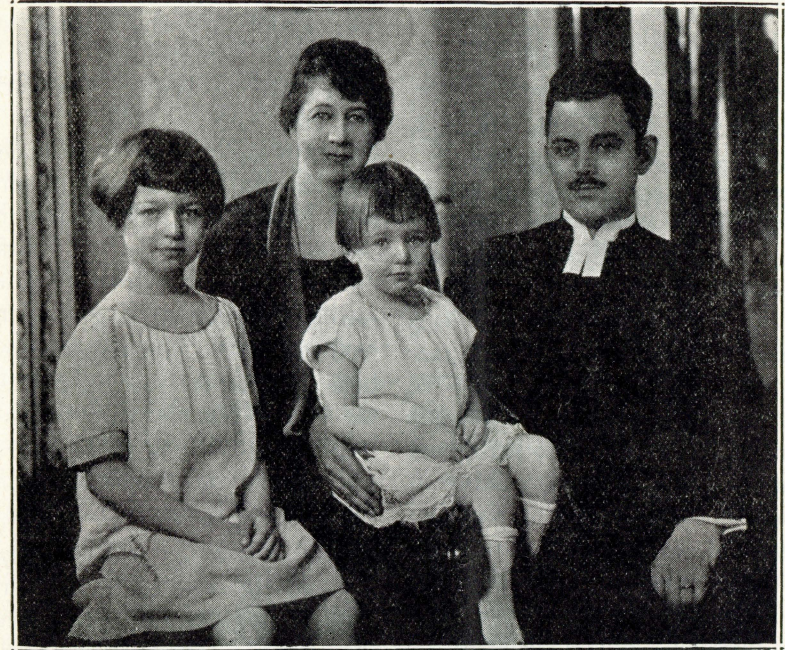
1928

BETHEL COMPANION

Vol. XXVIII

MARCH, 1928

No. 3



REV. C. EMIL BERGQUIST AND FAMILY

The BETHEL COMPANION takes great pleasure in presenting to its readers the above picture of Rev. C. Emil Bergquist and family. Rev. Bergquist takes up the duties as Pastor of Bethel Church on April 1st. The pastor comes to us from the Messiah Church, Minneapolis, Minnesota, where, for the past eight years, he has served that congregation and where the family leaves a host of friends. In their coming to Bethel and Chicago they are not strangers as the pastor, after his ordination in 1916, served the Bethany church, South Chicago, for three years. Their many friends in the District join with us in bidding the esteemed family a hearty welcome.

All Bethel will welcome the Pastor's family at a Reception on Friday evening, March 30th, at which occasion members and friends are cordially invited. On Palm Sunday, April 1st, at the Evening service Pastor Bergquist will preach his introductory sermon in Bethel.

Welcome, Rev. Bergquist and family, to Bethel and to the Southern Chicago District.

BETHEL COMPANION

Published monthly by the Augustana Book Concern, 639 38th Street, Rock Island, Illinois. Entered as second class matter, July 8, 1927, at the Post Office at Rock Island, Illinois, under the act of March 3, 1879.

Subscription Price, 50 cents per year.

Mr. Gilbert C. Bengtson, Editor.
Mr. J. A. Walgren, Mgr., 6200 Peoria St.

Bethel Sw. Ev. Luth. Church

Cor. 62nd and Peoria Streets.

During the vacancy members and friends may make their requests known to the acting pastor, Gilbert C. Bengtson, 6206 Peoria St. Tel. Res. Wentworth 2173, office Wentworth 5591 or to the vice pastor, Dr. H. E. Sandstedt, 5755 S. Wells St. Tel. Normal 2150.

With this issue we lay aside the editorial pen as well as other duties connected with the publishing of *Bethel Companion*. During the brief months of service in this capacity we have thoroughly enjoyed the privileges and the task has been most pleasant. Contributing to the pleasantness of this work we find that splendid cooperation on the part of contributors stand foremost. Following this is the spirit of forbearance the congregation has manifested in our many shortcomings as editor. We are indeed grateful for the expressions of satisfaction found in the manner in which the *Companion* has been conducted as well as constructive criticism and helpful hints given. We trust the *Bethel Companion* has served the purpose for which it is intended and ask for no greater reward than the continuance of interest of members and friends in your paper.

In surrendering the editorship to Rev. Bergquist, now pastor of Bethel, we ask but one favor: continued interest and cooperation in your parish publication. By so doing you will lighten his duties, instill enthusiasm and, incidentally, make the *Companion* that which you want it to be, your parish worker. We have no graduated rule by which to measure the work done by these monthly visits at every member's home. Yet, the results must not be minimized for the work it does is far greater than we always realize. Apparently the paper is read with much interest and its untold invitations to activity within the work of the church has and will continue to call its readers to active service in His Kingdom.

Our work ended, we wish continued success for *Bethel Companion* and the congregation it serves. To our successor we extend a hearty welcome and to its readers a grateful "Thank you."

In passing years our coming in and going out at Bethel has become so commonplace that it hardly behooves in the exodus that lies before us to give utterance in a farewell note. Yet it seems fitting and proper at the parting of the ways to reflect on days that have passed. Since 1922, when we were first introduced to Bethel, the memories that have amassed themselves are many and varied. Before the present sojourn had its beginning Bethel was often referred to as 'our summer home.' More particularly is this true of

Bethel parsonage, within whose walls we have witnessed many transformations. Throughout the changes, every nook and corner breathes of home. It is *Home*. A pleasant home, and, not infrequently, a refuge. A refuge in spite of ruins of wrecking processes, inspired by decorators and remodelers in their successful attempts to make its interior cozier and more convenient. A home, while its rightful tenants sought quiet and rest in other harbors, where its inviting solitude was eagerly sought and never feared.

We reflect on the many memories from the life within. With the Pastor's family no formalities were necessary. We felt and were dealt with as one of the household. Brotherly consideration on the part of Dr. Fors has always been our lot and his fatherly advice and mature judgment is ever to be revered. The pleasantries about the family table or in the home circle, where, if sunshine were lacking, the smiling countenance of Mrs. Fors and her words of courage and cheer, would dispel the deepest gloom. With that upon each member of the household comes pleasant memories. And, when the veil of sorrow and sadness wrap itself about the home, we find the roots of Christian fellowship enmeshed within the very heart.

As that fellowship in the home is dear, so, too, the contact with all Bethel. It has always been pleasant to mingle with the individual members in their church work and in their homes. We treasure highly

sincere frankness and openheartedness on the part of the members. Loyalty and expressions of appreciation have not been lacking. Our contact with societies within the church has left more than traces of pleasantries. Your thoughtfulness and sympathetic forbearance cannot be erased. Bethel retains a hold like that of home.

In leaving Bethel we do not surrender completely the fellowship of a congregation to Pastor Bergquist and his family. It is a blessed thought that such feelings can be shared and in sharing they are not diminished. The task has been most pleasant to keep home fires burning and thus to welcome the Pastor's family to the hearth where we trust they will experience an abundance of the warmth of Christian love and esteem. It is our sincere hope to set our footsteps Bethelward at frequent intervals and renew memories and share with all the fellowship of Home.

During the vacancy the office of vice pastor has been filled by Dr. H. E. Sandstedt of Bethlehem church. We cannot close our work at Bethel without a brief mention of the splendid work he has rendered as well as express the appreciation of the congregation for his services. Dr. Sandstedt has always been willing to give of his time in the performance of any duties he has been called on to render. What is more, he has taken a vital interest in the welfare of the congregation and through his personal interest has had our welfare at

heart. He has been a frequent caller at both the parsonage and also at homes where he has been asked to visit. This magnanimous spirit and his guidance are thoroughly appreciated. The spirit of fellowship and cooperation has never been wanting. We extend to him our personal thanks and that of an appreciative congregation for his splendid service and assure him a hearty welcome among us at all times.

A Note of Appreciation.

I wish to take this opportunity of expressing my sincere thanks to the Choir for the successful surprise party they planned for me as well as the splendid gift presented me on March 13th. Certainly the time-piece shall at all times remind of the splendid fellowship we have had together. A hearty thank you, members of the Choir.

GILBERT C. BENGTON.

Musical Program, 2nd Quarter, 1928.

TIME	SINGERS	SERVICE
April 1, A. M.	Choir and Roselyn Paulson	(Confirmation), Palm Sunday
April 1, P. M.	Choir and Quartette	English
April 5, P. M.	Choir (Communion)	English
April 6, P. M.	Song Service by Choir	English Good Friday
April 8, P. M.	Choir	English & Swedish, Easter
April 8, P. M.	Sunday School Program	English
April 15, A. M.	Choir	Swedish 1st Sun. after Easter
April 15, P. M.	Mrs. Larson & Mrs. Paulson	English
April 22, A. M.	Choir and Eulalia Westberg	English, 2nd Sun. after Easter
April 22, P. M.	Anna Burgeson	Swedish
April 29, A. M.	Children's Service	English 3rd Sun. after Easter
April 29, P. M.	Roselyn Paulson	Swedish
May 6, A. M.	Choir (Communion)	Swedish, 4th Sun. after Easter
May 6, P. M.	Eulalia Westberg	English
May 13, A. M.	Choir and Ernest Westberg	English, 5th Sun. after Easter
May 13, P. M.	Mrs. Larson & Mrs. Paulson	Swedish
May 20, A. M.	Quartette	Swedish, 6th Sun. after Easter
May 20, P. M.	Song Service by Choir	English
May 27, A. M.	Choir and Roselyn Paulson	English, Pentecost Sunday
May 27, P. M.	Anna Burgeson	Swedish
June 3, A. M.	Choir (Communion)	Swedish, Trinity Sunday
June 3, P. M.	Mrs. Larson & Mrs. Paulson	English
June 10, A. M.	Choir and Ernest Westberg	English, 1st Sun., Trinity
June 10, P. M.	Eulalia Westberg	Swedish
June 17, A. M.	Quartette	Swedish, 2nd Sun., Trinity
June 17, P. M.	Song Service by Choir	English
June 24, A. M.	Choir and Roselyn Paulson	English, 3rd Sun., Trinity
June 24, P. M.	Service at Old People's Home	

The Message of Easter.

The festival of Easter is of crown-ing importance to the believer and to the entire world. We rejoice every time when we celebrate Christmas to commemorate the birth of the Saviour; but Christmas is without meaning unless followed by Easter. Christ's birth requires the resurrection. To speak of a Saviour conquered by death would be a contradiction in terms. Christ proved His Messiahship by His absolute victory over death.

"Christ is arisen, mortals all hail,
Break ye your prison, rend ye the
veil;
Now is the Master near, now He is
here."

The highest hope of man, which never can be totally suppressed by misfortune, suffering, or even doubt, is the hope of eternal life. It indeed seems instinctive to the human soul. The heathen, after his fashion, believes in a life after death. Socrates, Plato, Cicero, among cultured pagans, had exalted thoughts of the hereafter. But nowhere do we find such clear teaching concerning the hereafter as from the lips of Jesus. With Him it is not vague or dreamy existence, but a beautiful reality. He says, "In my Father's house are many mansions; if it were not so I would have told you, for I go to prepare a place for you." But even more than by His life of His teaching, He proved to us the truth of eternal life by His death and resurrection. He showed Himself to be Master of death. And just as it was a step-

ping-stone to a larger and more glorious existence to Him, so it will be for all the redeemed. We can now courageously say with the poet:

"There is no death, what seems so
is transition,
This life of mortal breath is but a
gateway to the fields Elysian,
Whose portals we call death."

The facts of Easter should evermore inspire us with the confidence that, in spite of appearances, death is not the end, but only the beginning of real life in company with all the redeemed and blood-washed throng of believers, from every nation and tribe of the earth; a life without suffering and pain and heartaches and tears; a life where all these former things are done away. Easter gives us the assurance that our loved ones, having died in the faith, though they have passed from sight for a season, shall be reunited with us after a little while to part never, never more.

REV. L. W. NORDSIECK.

Han lever.

Påskhögtiden, soluppgångens tid, är nu inne. Borta vid östra synranden höjer sig nådens sol med salighet under sina vingar. Varenda stråle reflekterar i himmelskt guld de sköna orden: "Han lever!"

Det trötta, domnade hjärtat vaknar ur sin slummer. Strålarna lysa in i dess innersta vrår, värma och väcka till liv. "Han lever!" ropade med av glädje darrande röst. Han, som kom i världen för att med sitt blod återköpa dig, tränande och ofta

olyckliga människohjärta, ser du, han lever! Han lever, ty han har uppstått från de dödas rike.

Det är salighetens dag, en klar och skön dag med ljus och hopp i oändlighet, som nu uppgått. Guds nådessol lyser över oss i dess fulla glans. Herren vill fröjda våra hjärtan och göra oss riktigt glada på denna stora dag. Därför, du lilla ängsliga hjärta, jaga bort dina bekymmer, din klagan och bittra sorg! Hör du inte, att han är uppstånden och lever?

Käre läsare! Vad bör du nu göra? Jo, spring ut på de vida Guds löftesfälten och skåda Guds godhet! Stäng dig inte inne i det lilla rum, som heter "jag själf"! Låt inte missmodets och klagans suckar så hölja solen, att ej en stråle kan titta in till dig! Upp med fönstret, ditt hjärtas fönster, och låt påsksolen omstråla dig med ljus och liv! Brist ut i jubel, sjung hans lov, som köpt dig åt Gud med sitt blod, att du må leva, evigt leva!

Herrens påsk.

Och blodet skall vara ett tecken, eder till räddning, på de hus i vilka I ären; ty när jag ser blodet, skall jag gå förbi eder. Och ingen hemsökelse skall drabba eder med fördärv, när jag slår Egyptens land. 2 Mos. 12: 13.

Blodet av påskalammet skulle strykas på det övre dörrträet och på de två dörrposterna. Detta hade ett dubbel ändamål. För det första blev huset därigenom försonat; påskalammet var slaktat efter Herrens befallning, och emedan detta syftade

på Kristus, så blev hans försoning detta hus tillräknad, syndaskulden utplånad och straffdomen avvänd. För det andra var detta blod omkring dörren för dödsängeln ett tecken, att han där icke fick ingå. Med påskalamets slaktande verkställdes försoningen, men med blodtecknet blev den bevisad. Detta tecken var en öppen trosbekännelse och var även nödvändigt till räddningen ifrån straffdomen. — Vårt liv måste vara en öppen trosbekännelse för var och en som nalkas vår husdörr. —P. F.

Den natten blev mycken synd ångrad och bekänd ibland Israels barn, och mångt ödmjukt knäfall med bön om nåd och förskoning gjort, mången gammal räkenskap uppgjord. Aldrig syntes frälsningen så långt borta. Endast död och undergång, endast hjälplöshet och vanmakt sågs överallt. Men då, när Herren och hans barmhärtighet blev dem allt, och de själva och deras eget platt intet, då var förlossningens timme snart slagen. Men medan israeliterna således mot de kommande fador stodo fullt betryggade bakom lammets blod och helt resfärdiga till att på Herrens vink draga ut av trälldomshuset till Kanaans sköna land, hade egyptierna den aftonen lagt sig i stolt säkerhet och obotfärdiga som annars och icke annat, vad natten skulle bringa dem. Först ljudet av mordängeln's steg, det är synen av de förskräckliga följder som denna plåga framkallade, har väckt dem, och sorglösheten har plötsligt blivit avlöst av ett stort skri i hela Egyptens land (v. 30).

Den natten i Egypten må påminna oss om den yttersta dagens förfärliga natt. Salig är den, som denna natt finnes vaken, väl beskyddad bakom Kristi blod och redo att möta sin Gud! Ur L. B.

Our Societies.

Missionsföreningen. Missionsföreningen mötte den 2 mars i kyrkan på inbjudan av fruarna Edwin Johnson och Grell. Mötet öppnades på sedvanligt sätt med sång, bibelläsning samt bön. Föreningen fick då lyssna till tvenne sånger av fruarna Larson och Paulson samt fiolsolo av Dale Johnson. Mr Bengtson höll ett lärorikt tal om "Korset" såsom en fastlagsbetraktelse. Det bestämdes att vi ha även i år en Plunkett Luncheon i oktober månad. Mötet avslöts med bön, varefter en riklig kollekt upptogs. Nästa möte hålles i kyrkan den 6 april på inbjudan av fruarna Olsson och Anderson samt i maj månad av fruarna Herbert Larson och O. F. Olson även i kyrkan. MRS CHAS. KNUTSON, sekr.

Brotherhood. Bethel Brotherhood met March 19 in the church school rooms. Pres. Herbert Larson opened with Scripture reading and prayer and the assembly sang a hymn. The minutes were read by the secretary and were followed by a business session. Mr. John Westberg reported for the concert committee that the Wennerberg Chorus of Augustana College had been secured for our concert and will appear in Bethel on Friday eve., April 13. A ticket

committee, consisting of Arthur Ehrenstrom, John Burgeson and Chas. Tronerud, was appointed to distribute tickets. Each member was given ten tickets to sell. Ushers for the concert were appointed and the following will serve: Herbert Larson Chas. A. Nelson, Carl Wahlen, Carl Seaberg, Claus Johnson, James Nelson. By motion it was decided that next meeting be a Social. Herbert Larson, Chas. A. Nelson, C. F. Seaberg and Henry Larson, with the aid of their wives, volunteered to serve at the next meeting and also to arrange for the program. The meeting closed with the singing of a hymn and prayer was offered by Herbert Larson.

CHAS. A. NELSON, Sec'y.

Bethel Circle. Bethel Circle was entertained on March 14 by Elvie Aanerud and Peggy Anderson at Mrs. Aanerud's home, 8115 Green St. The meeting was opened by singing a hymn after which Esther Carlson led in prayer. At the business session which followed \$5.00 was voted for a needy family, Ruth and Edna Gustafson to visit the family. Formal motion was made to have a concert in November as our special affair for the year. A Rummage Sale is also planned and members were asked to lay aside old clothing and other material for this sale. Thyra Johnson presented the matter of moving pictures of Camp Lucerne which Miss Douglas would like to show at one of our meetings. The matter was tabled until the May meeting. The pro-

gram for the evening consisted of several readings by little Lorraine Aanerud and Mr. Bengtson conducted the final Bible study of the last chapter of the Epistle of James. The meeting was then closed with prayers. Dues and collection amounted to \$6.50. The Bethel Circle will be entertained on April 11 by Anna Burgeson and Esther Carlson at the latter's home, 7243 Rockwell st. All welcome.

EDNA GUSTAFSON, Sec'y.

Teachers' Corps. The Sunday school teachers met for their monthly business meeting on Thursday, March 1, after the Prayer service. Plans for the Welcome program, on April 1, for our new pastor, were discussed and committees on arrangements reported. The question was brought up about our teachers and the teachers' training class and whether or not a girl who has not had any training in this course but who really would like to teach, would be eligible to become a teacher. Considerable discussion was precipitated on the matter, but no action was taken, the matter to be decided at a later date. Mr. Ernest Bratlie spoke on the capability of our Sunday school teachers. Bible Quarterlies were also discussed but action was tabled until further information regarding our subscription and its expiration is determined. The resignation of Miss Svea Broman as assistant Superintendent was accepted with regret. The meeting closed with the benediction.

HELEN LARSON, Sec'y.

Choir Notes.

The Choir has enjoyed several social events of late. On March 9 Mr. Bengtson invited the choir to step into the parsonage after choir practice to sample some coffee and eats he had prepared for us. Certainly, we enjoyed it. After practice on March 23rd our Director, Ralph Peterson, served us a splendid spread in the school room.

On March 13 the Choir gave Mr. Bengtson a Surprise Party at the home of Ruth Larson, 8040 Grandon Ave. We wished to show our appreciation to Mr. Bengtson for all he has done for us by presenting him with a gift. He has helped to make possible the purchase of choir robes and has also helped us by singing solos at various occasions. Mr. Ralph Peterson presented a wrist watch to Mr. Bengtson in behalf of the choir and we hope that it may serve as a remembrance from Bethel Church Choir at all times.

The Board of Administration have installed a wardrobe for our choir robes and the same has been placed in the rear of the church parlors. Thanks to the Board for this added improvement for our convenience. M. J., Reporter.

Confirmation Class 1928.

The following members of the 1928 Confirmation Class will be presented for confirmation on Palm Sunday, April 1.

Helen Marie Anderson,
1038 W. 69 St.

Marion Eleanor Anderson,
6554 S. Aberdeen St.

Siri Ingegard Anderson,
10333 Maplewod Ave.

Linnea Anna Ellison,
6600 S. Morgan St.

Mildred Caroline Hanson,
3709 W. 61 St.

Harold Emanuel Jacobson,
5756 S. May St.

Viola Dagmar Janson,
7030 S. Union Ave.

Alvin Raymond Johnson,
5951 S. Union Ave.

Eleanor Marie Johnson,
630 W. 61 St.

Vera Florence Victoria Johnson
630 W. 61 St.

William Adolph Johnson,
7640 Eggleston Ave.

Helen Lillian Osberg,
5915 S. May St.

Anna Birgit Ottoson,
5659 Michigan Ave.

Margaret Anna Rydell,
9057 Loomis St.

Clifton John Adolph Ryding,
6145 S. Racine Ave.

Lilly Caroline Stone,
7224 S. Carpenter St.

Gladys Marie Sundstrom,
5627 S. Aberdeen St.

Young People's Column.

We knew they'd do it! Yes, our Basketball boys beat St. Matthew's with a score of 25 to 1 at the championship game on Wednesday, March 7. Aren't we proud of them? Certainly, and we're all coming to the banquet to be given in their honor on Thursday, March 12th.

The Senior Luther League is busy planning their May Sale, to be held

on the 18th and 19th of May. Watch for further particulars.

The Semper Fidelis Girls gave a Tea for their mothers at the Southmoor Hotel on Sunday, March 18. A splendid afternoon was spent together and several of the girls with their mothers attended the Choir Song Service in the evening.

Mother: "Don't ask so many questions, child. Curiosity killed a cat."

Willie: "What did the cat want to know, mother?"

Proud Parent (who served): "What I told you is the story of the World War."

His son: "But, Daddy, what did they need the rest of the army for?"

Pastoral Acts.

BAPTISMS.

*Nov. 2: Lois Marie daughter of Anton and Alice Ehrhart, 6747 Oakley Ave. Born June 26, 1927.

MARRIAGES.

*Oct. 29: Simon C. Wikstrom and Marvel W. Nelson, now residing at 1315 W. 73 St.

FUNERALS.

Mar. 8: Mrs. Sofia C. Kell, Flushing, N. Y., aged 81 years, 9 months and 17 days.

NEW MEMBERS.

Mar. 5: Helmer Nelson, 7126 Harvard Ave., from Escanaba, Mich. Mrs Richard Valles and little daughter Laura from Elim, Pullman.

*Omitted from report of November, 1927.

Coming Events.

The weeks that lie before us are replete with many and varied events that should bring great numbers to Bethel. In the column below we shall attempt to relate a few of the outstanding events.

During the week of March 25-31 there are services nearly every day that will be of value to all. March 26th, the confirmation class with their parents and guardians gathered for an informal service when we became better acquainted with these families and incidentally built up a greater interest for the work within the congregation. Members of the Board and teachers also attended this meeting.

On Tuesday, Wednesday and Thursday evenings there were special Lenten services when we had visiting pastors with us to speak on assigned topics.

Friday evening, March 30th, the congregation will hold the reception for Pastor Bergquist and family, when we expect to see the entire membership present and many friends of the congregation and the pastor's family. Pastors of the District are also expected to be in attendance. It is the outstanding social event of the season.

Palm Sunday, April 1st, promises to be a blessed day in His sanctuary. At the Sunday school hour the children and the Bible Class will welcome their pastor with an informal program. At the hour of morning

worship a class of 17 confirmands will be confirmed. The Luther League holds its regular meeting at five o'clock in the afternoon. And at the evening service Pastor Bergquist will conduct his introductory service as pastor of Bethel. At both the morning worship and in the evening the Choir will render special music.

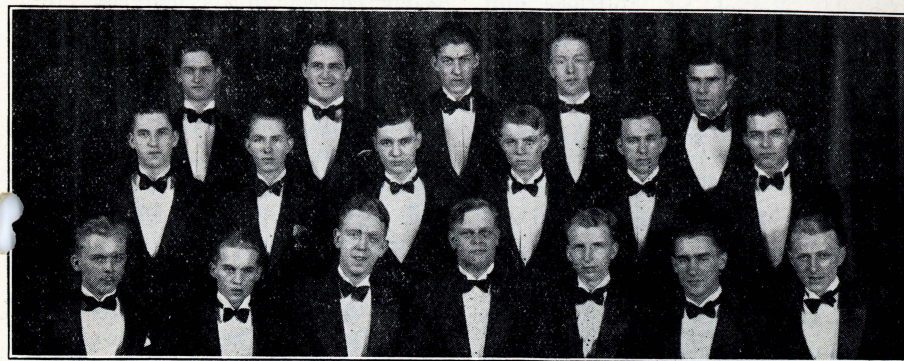
Following Palm Sunday there will be another week of special services. The Lenten evening services will continue on Tuesday and Wednesday evenings.

Maundy Thursday evening the Lord's Supper will be celebrated and at that time the confirmands will take their first communion.

On Good Friday morning worship in Swedish will be conducted at 10:45. The April-June Dorcas Birthday group will serve a luncheon at 12:30. The Mission Society will hold its monthly meeting at 2 o'clock in the afternoon. And at 8 o'clock in the evening the choir will give its sacred concert program when Berwald's Crucifixion and Resurrection will be rendered.

Easter Sunday, April 8th, the morning service will be conducted in both languages and special singing will be furnished. The children's Easter Program at 6:30 in the evening.

Having won new laurels for themselves and Bethel, the basketball boys will be given a banquet in the church parlors on Thursday evening,



WENNERBERG MALE CHORUS OF AUGUSTANA COLLEGE.

April 12th. It is needless to say that all who have followed our boys through the past season will be in attendance, and the Luther League, under whose auspices the banquet is give, invites members and friends to come out and show their appreciation to the team for their splendid work and sportsmanship. Tickets are \$1.00.

The Wennerberg Male Chorus of Augustana College will appear in concert at Bethel on Friday evening, April 13th, under the auspices of the Bethel Brotherhood. The Wennerbergs are so well known to all that they need no special introduction. Suffice it to say they have won for themselves fame wherever they appear in concert. Their program here is the only one that will be given in Chicago this season, and we trust their many friends from other congregations will be here in large number to encourage our boys and also show their loyalty to our own school. Tickets are 75 cents.

The Chicago Lutheran Bible School has been granted the privilege of conducting regional meetings at Bethel for this section of all Lutheran churches cooperating with the Bible School movement. The date set is April 22, 23 and 24. Speakers and leaders of note will appear on the program of each evening. Watch for further announcements regarding these dates.

Plans are fast taking form for the Luther League May Sale on May 18 and 19. The several committees are actively engaged in making their special part in this sale an outstanding event. Elaborate booths and many and varied articles are being assembled by both the Senior and Junior Leagues. Your assistance and attendance are heartily solicited.

The City Championship in the Augustana Basketball League will be determined on Saturday evening, March 31st, at the Y. M. C. A. College, 53rd and Drexel Ave. The three leading teams of the Southern

District, Bethel, St. Matthew and Grace, will meet the teams holding similar positions in the Northwest District. Our Bethel boys will play the strong Nebo team at this event.

News Notes.

The splendid work of the choir continues. At the last Song Service night, March 18th, the program was varied considerably and the general theme for the evening was such as is in keeping with the Lenten season. A pageant, "The Challenge of the Cross," was presented by six of our young ladies under the able leadership of Mrs. F. T. Westberg, who also took the leading part. The choir interspersed the program with several hymns as responses in the general story presented. The splendid support of the congregation is greatly appreciated.

It hardly need be included in the news items that our basketball boys won the final championship game in the District League, for every member has followed the boys through the entire season with the greatest interest. However, the boys won the hard-fought game with St. Matthew on the evening of March 7th by a score of 16 to 25. This special game was played to decide a tie between our boys and the splendid St. Matthew aggregation.

The work on a new Directory for the congregation has been started. The many details in producing such a directory that will be of the greatest service to the church and most

nearly correct in its materials require the cooperation of every member. The material is being compiled by Mr. Bengtson and corrections as well as changes of addresses should be reported to him at once.

A wardrobe for the purpose of storing choir robes as well as for the convenience of choir members is being installed in the church parlors by the Board of Trustees. The work is being done by the John Westberg Company.

Members of the Semper Fidelis Girls are making strenuous efforts to make a success of the nursery established some months ago. The girls are very desirous that Cradle Roll mothers and others who have little ones eligible for the nursery bring the children on Sunday mornings and leave them in their care while the mothers attend and enjoy the morning worship. Encourage these splendid girls in the task they have undertaken.

Our Societies.

Senior Luther League. Our Senior Luther League opened its March meeting, March 4th, at 5 P.M., with singing of song "Down at the Cross Where My Saviour Died," after which Mr. Bengtson read a portion of Scripture from the second chapter of Exodus. Eulalia Westberg introduced us to "Miriam" in the way of a character study. It was decided to have a Basketball Banquet, and the date was set for April 12th. The committee in charge is working hard to make this a success. Maurice Ol-

son was elected to the assist. editorship for the Luther League column. Bear in mind our May Sale, May 18th and 19th. To all our young folks, whether members of Bethel or not, we extend a most hearty welcome to our meetings the first Sunday of every month. At our next meeting, April 1st, we look forward to having our new pastor with us and anticipate bigger and better things for the future. Will you come to our next meeting? We need all of our Bethel young folks.

SVEA JOHNSON, Sec'y.

Dorkas. Dorkas-föreningen höll sitt möte den 21 mars på inbjudning av fruarna H. Almer, H. Anderson, M. Anderson, R. Anderson. Mötet öppnades på sedvanligt sätt, varefter ordföranden hälsade alla välkomna. Protokollet från föregående mötet upplästes och antogs. Kassören rapporterade \$151.74 i kassan. Visittkommittéen hade gjort 42 besök; hela kommittéen hade besökt mrs And. Joneson, 7924 Marshfield Ave., och mrs J. E. Nelson, 5942 Carpenter St. Blommor hade skänkts till mrs Hjalmar Johnson och mrs Magnus Erickson. Alla dessa vänner hälsa och tacka för blommor och besök. I blomsterkassan fanns \$7.14. Mrs C. F. Carlson, å Linneas vägnar, frågade efter hjälp att sy om gamla kläder en eller två dagar i månaden, och lovade mrs Borgstrand och mrs Marker att hjälpa till. Mrs Einar Carlson föreslog att Dorkas insätter nya "curtain rods" i pastorshuset, och blev så beslutat. Det beslöts att köpa skedar och di-

verse saker för köket, och skola mrs Axel Johnson och mrs Fred Paulson förestå detta. Begäran inkom från kyrkorådet att sköta om förfriskningar vid mottagningen för pastorfamiljen den 30 mars, och invaldes Dorkas-styrelsen att taga hand om denna sak. Många lovade att bringa saker, och även upptogs en kollekt, som blev \$14.29, och skall brukas för förfriskningar. Det annonserades att det blir lunch serverad i kyrkan långfredagen, och priset blir 40 cents. Vi hade glädjen att mottaga tre nya medlemmar i föreningen, nämligen mrs Anna Carlson, 6919 Aberdeen, mrs Gust Larson, 5814 Morgan, och mrs J. E. Lindquist, 5810 Morgan, och hälsas dessa våra vänner hjärtligt välkomna. Inbjudning för nästa möte, den 18 april, av fruarna Ahlson, Aron Anderson, C. Burgeson, John Burgeson, Anderberg och H. Bratlie. Födelsedagsgåvor inlämnades av fruarna Bratlie, Stockel, Wiman, C. Benson, S. P. Davidson, Magnuson, Carlson, Gust Johnson. Ett kort program utfördes, varefter mrs Johnson tackade mr Bengtson för allt vad han gjort under tiden han varit med oss, och uppstod hela föreningen och visade sin tacksamhet. Även tackade ordföranden alla, både de som serverade och de som deltog i programmet. Mr Bengtson talade några ord till föreningen, varefter han avslutade mötet med bön och sjöngs den lilla sångversen "O Jesus, bli när oss." Gott kaffe med dopp serverades. Medlemsavgiften blev \$42.25, för hjälpfonden \$3.40.

Mrs J. E. NELSON, sekr.

FINANCIAL REPORT FOR JANUARY, FEBRUARY, MARCH, 1928.

RECEIPTS.

Membership	\$2,005.20
Collections	295.41
Contribution to <i>Bethel Companion</i>	60.65
Initial Offerings	22.36
Bethel Circle	300.00
Bethel Brotherhood	105.00
Sunday School	160.00
Dorcas	100.00

Bethphage Mission	100.26
Advertisements	16.00
Hymnals	3.00
Illinois Conference Refund	86.26
Donations:	
A. F. Seaberg	25.00
John E. Nelson	100.00
	<u>\$3,379.08</u>
Turned over to A. W. Marker, Treas.	\$3,379.08
	M. E. OLSON, Fin. Sec'y.

MEMBERSHIP DUES FOR JANUARY, FEBRUARY AND MARCH, 1928.

	1927	1928
1. Aanerud, Mr. and Mrs. Louis	\$.....	\$4.50
2. Aanerud, Roy
3. Aanerud, Mr. and Mrs. Bernard	6.00
4. Abrahamson, Mr. and Mrs. Arlie
5. Adlertz, Mr. and Mrs. Gustaf	3.50
6. Ahlberg, Mrs. Anna	4.40
7. Ahlberg, A. H.	2.00
8. Ahlberg, Miss Signa	6.00
9. Ahlberg, A. C.	6.00
10. Ahlberg, Miss Esther	6.00
11. Ahlstedt, Mrs. Maria	3.00
12. Anderberg, Mrs. Hanna
13. Ahlson, Mr. and Mrs. Carl A.	4.00
14. Ahlson, Alice50
15. Alexon, Mr. John	20.00
16. Alexon, Jennie	15.00
17. Almer, Arthur
18. Almer, Mrs. Hulda
19. Almer, Carl
21. Anderson, Genevieve
22. Anderson, Mrs. Maria	3.25
23. Anderson, Willard
30. Anderson, Mr. and Mrs. Jonas H.
31. Anderson, Mrs. Lena	2.00
32. Anderson, Esther	3.15	2.50
33. Anderson, Frank
34. Anderson, Harold
35. Anderson, Andrew
36. Anderson, Hildur
37. Anderson, Mr. and Mrs. Elmer	4.50
38. Anderson, Mrs. Carolina	3.15	.45
39. Anderson, Ruth
40. Andreen, Mr. and Mrs. Erick
41. Anderson, Mrs. Augusta	1.50	2.75
42. Anderson, Olga	2.50
43. Anderson, Florence25	5.50
44. Anderson, Mrs. Mabel
45. Anderson, Mr. & Mrs. A. R.	7.00
46. Anderson, Hilda	1.90
47. Anderson, Edna	10.10
48. Anderson, Carl John
49. Anderson, Carl Iran
50. Anderson, Vivian
51. Anderson, John50	1.00
52. Anderson, Mr. and Mrs. Hugo
53. Anderson, Andrew L.	5.75
54. Anderson, Mr. and Mrs. J. A.	6.00
55. Anderson, James75
56. Anderson, Conrad

57. Anderson, Edward	1927	1928
58. Anderson, Mary	3.90
59. Anderson, Mr. and Mrs. Charles A.
63. Anderson, Dorothy	3.60
64. Anderson, Stanley80
65. Anderson, Bernice90
66. Anderson, Mr. and Mrs. August	3.00
67. Anderson, Ruth75
68. Anderson, Hildur25
69. Anderson, Mr. and Mrs. J. E.	10.25	4.00
70. Anderson, Esther K.	3.25
71. Anderson, Mr. and Mrs. Carl A.
72. Anderson, Karin
73. Anderson, George
74. Anderson, Elsa	1.60
75. Alm, Mrs. J.
76. Anderson, Mrs. Hanna	4.00
81. Backstrom, Arthur
82. Ballard, James
83. Bahrd, Christina
84. Benson, Grace1080
85. Benson, Mr. and Mrs. John Alfred
86. Benson, Christina	5.00
87. Benson, Mr. and Mrs. Bernard
88. Benson, Harry
89. Benson, Mrs. Oscar
90. Benson, Rudolph
91. Benson, Otto
92. Benson, Nestor	5.20
93. Benson, Adolph	4.40
94. Bengston, Mr. and Mrs. Nels.	22.50
95. Berg, Mrs. Anna
96. Billing, Mr. and Mrs. Bengt
97. Billing, Arthur
98. Billing, Judith
99. Bjork, Mr. and Mrs. Carl L.	5.00
100. Bjork, Mr. and Mrs. Stanley
101. Bohlin, Mrs. Lovisa	9.00	4.50
102. Boland, Violet	4.55
103. Borgstrand, Mr. and Mrs. Carl A.
104. Bostrom, Mrs. Anna
105. Bostrom, Earl
106. Bradish, Mrs. Anna
107. Brueswitz, Mrs. Anna	2.00
108. Bratlie, Mr. and Mrs. Hans	1.95	7.80
109. Bratlie, Mr. and Mrs. Herbert	16.00
110. Bratlie, Mr. and Mrs. Ernest	30.00
111. Broman, Mr. and Mrs. Peter	6.50
112. Broman, Mrs. Clara	1.20	2.00
113. Broman, Svea	1.20	2.70
114. Blomgren, Freda70	2.45
115. Borgstrand, Carl	5.00
116. Burgeson, Mr. and Mrs. Charles	11.00
117. Burgeson, Mr. and Mrs. John A.	3.00
118. Burgeson, J. August85
119. Burgeson, John A.
120. Burgeson, Anna	10.00
121. Burgeson, Stanley
122. Burgeson, Bennett
123. Burke, Mrs. Ellen
124. Burke, Robert
125. Benson, Amelia
126. Borggren, Arnold

	1927	1928
131. Carlson, Mr. and Mrs. C. F.	5.00
132. Carlson, Mrs. Augusta	10.00
133. Carlson, Clara	3.00
134. Carlson, Mrs. O. W.20
135. Carlson, George10
136. Carlson, John
137. Carlson, Hulda
138. Carlson, Vega
139. Carlson, Mr. and Mrs. Erick	10.00
140. Carlson, Stanley	1.65
141. Carlson, Emery
142. Carlson, Esther M.	.75	3.25
143. Carlson, Elmer
144. Carlson, Mr. and Mrs. Einar
145. Carlson, Mrs. Anna
146. Cheralier, Mrs. Judith
148. Crook, Lester
147. Crook, Mr. and Mrs. Carl G.	6.50
149. Crook, Adolph	4.00
150. Crook, William
151. Crook, Evelyn40
152. Christenson, Mrs. Mathilda
153. Carlson, Mrs. Tillie	1.00
159. Dahl, Mr. and Mrs. Gustaf
160. Dahlberg, Mr. and Mrs. Emanuel	7.30
161. Dahlberg, Jennie	1.45
162. Dahlgren, Gordon
165. Dahlin, Mr. and Mrs. Lars	3.75
166. Dahlin, Violet	1.95
167. Dahlin, Richard	1.00
168. Dahlin, Hilda	1.00
169. Dahlman, Florence	2.15
170. Dahlman, Sigrid	1.10
171. Dahl, Howard	3.50
172. Dahlstrom, Mrs. Charles	1.00
173. Dahlstrom, William
174. Danielson, Mr. and Mrs. Sven	9.75
180. Ekblom, John	3.00
181. Ehrenstrom, Fred	5.00
182. Ehrenstrom, Mr. and Mrs. Arthur
183. Eliason, Esther J.
184. Ekblom, Mrs. Josephine	2.00
185. Ekerall, Mrs. Ida
186. Elliason, Mr. and Mrs. Ernest
187. Ellison, Carl
188. Ellison, Alice
189. Ellison, Albert
190. Engstrom, Mrs. Anna	7.50
191. Engstrom, Evelyn	7.50
192. Engus, Mrs. Anna
194. Engus, Earl
195. Erickson, Mr. and Mrs. August
196. Erickson, Ellida	2.40
197. Erickson, Erick
198. Erickson, Carl
199. Erickson, Eleanore10
200. Erickson, Ruth
201. Erickson, Gustaf William	2.00
205. Fagerberg, Hilma	1.20
206. Finnegan, Mrs. Johanna
207. Finnegan, Marie
208. Fogelsang, Mrs. Mary
209. Fahlstrom, Carl

	1927	1928
210. Flood, Gordon	1.20	1.80
212. Forsgren, Mr. and Mrs. Gustaf
213. Foster, Mrs. Pauline
214. Foster, Pauline
215. Franklin, Mrs. Rena	2.75
216. Frick, Mr. and Mrs. Ronald	5.00
217. Freberg, Mr. and Mrs. Axel
218. Freberg, Milton
219. Hjersted, Alice, Mrs.
220. Fund, Mr. and Mrs. Carl
225. Garrett, Mr. and Mrs. John H.	1.00
226. Gelling, Mrs. George
227. Gereke, Paul
228. Gustafson, Mrs. Anna S.	3.25
229. Gustafson, Ruth	6.50
230. Gustafson, Mrs. G. N.
231. Gustafson, Mrs. Mabel
232. Gustafson, Mrs. Nellie	1.80
233. Gustafson, Edna	4.55
234. Graham, Dorothy
236. Gustafson, Victor
239. Grell, Mrs. Olga	4.00
240. Grell, Arvid	.60	3.90
241. Grell, Eleanore	2.00
246. Haarlow, Mr. and Mrs. William
247. Hawkins, Mrs. Ebba	15.00
248. Hagelburg, Lilly
249. Hageman, Mr. and Mrs. Claus
250. Hageman, Einar
251. Hageman, Mildred	.10	.50
252. Hall, Josephine
253. Hall, Wesley
254. Hallberg, Mrs. Nancy
255. Hallberg, Norma
256. Hallenberg, Linnea75
257. Hammar, Mr. and Mrs. Axel
258. Hanson, Mrs. Mary
259. Hansen, Mrs. Florence	6.00
260. Hansen, Mrs. Carrie
261. Hansen, Helen
262. Hart, Mrs. Hilda	10.00
263. Hedlund, Mr. and Mrs. Alfred C.	10.00
264. Heike, Mrs. Josephine	5.00
265. Helberg, Mrs. Nellie
266. Helberg, Mrs. Ellen
267. Helberg, Edwin
268. Henry, Mrs. Esther	2.25
270. Herlin, Mr. and Mrs. August
271. Herlin, Grace
272. Hessel, Mr. and Mrs. Ellis
273. Hult, Esther	4.00
274. Hult, Mr. and Mrs. John	3.00
275. Hummel, Martha	15.00
276. Helberg, Stella
277. Herlin, Theodore
281. Isacson, Hedda	1.00
282. Isaacson, George
291. Jansson, Mr. and Mrs. Hilde E.	6.00
292. Jansson, Bror	5.50
293. Janson, Mr. and Mrs. Carl
294. Janson, William
295. Janson, Alice
296. Johanson, Mr. and Mrs. Emanuel	7.80

	1927	1928
297. Johanson, Einer	20.00	3.00
298. Johanson, Mr. and Mrs. Gustaf	25.00	1.50
299. Johanson, Folkie R.		
300. Johanson, Emma		15.00
301. Johnson, Albertina		
302. Johnson, Mrs. Hilda Maria		
303. Johnson, Julia		
304. Johnson, Mr. and Mrs. Claus		10.00
305. Johnson, Svea		6.75
306. Johnson, Mildred		4.40
307. Johnson, Mr. and Mrs. C. F.		5.50
308. Johnson, Halvard		.29
309. Johnson, Margaret		.55
310. Johnson, Martha		1.20
311. Johnson, Mrs. Henrietta		3.90
312. Johnson, Carl Edwin		5.00
313. Joneson, Mr. and Mrs. Andres G.	31.65	
314. Johnson, Mr. and Mrs. C. E.		6.00
315. Johnson, Mr. and Mrs. Hugo	1.50	8.25
316. Taylor, Mrs. Thekla		
317. Johnson, Mr. and Mrs. Andrew A.	.50	5.00
318. Johnson, Esther	.25	2.50
319. Johnson, Tillie		5.00
320. Johnson, Ellen		5.00
321. Johnson, Mrs. Anna M.		1.80
322. Johnson, Esther M.		3.85
323. Johnson, Mr. and Mrs. Roy		
324. Johnson, Ann		
325. Johnson, Carl H. E.		2.75
326. Johnson, Ruth		1.40
327. Johnson, Carolina J.		
328. Johnson, Mrs. Alfred		
329. Johnson, Mr. and Mrs. John B.		
330. Johnson, Violet		
331. Johnson, Gilbert		
332. Johnson, Oliver		
333. Johnson, Mrs. Hulda		1.75
334. Johnson, Mabel		.50
335. Saville, Mrs. Hazel		
336. Johnson, Helen		.50
339. Johnson, Mr. and Mrs. J. Thure		6.50
340. Johnson, Florence	.50	3.10
341. Johnson, Evelyn	.20	1.20
342. Johnson, Mrs. Albert		
343. Johnson, Mr. and Mrs. Axel		5.50
344. Johnson, Mauritz		1.10
345. Johnson, Frederick		1.85
346. Johnson, Runa		1.30
347. Johnson, Mr. and Mrs. Carl H.	3.00	
348. Johnson, Mr. and Mrs. John E.		5.00
349. Johnson, Martin A.		
350. Johnson, Mr. and Mrs. John	.50	6.00
351. Johnson, Herbert	.80	2.20
352. Johnson, Thyra	.30	3.90
353. Johnson, Mr. and Mrs. Lenard		
355. Johnson, Mrs. Alma		
356. Johnson, Alice		
357. Johnson, Ethel		
358. Johnson, Mr. and Mrs. William W.	25.00	
359. Johnson, Eleanore		.25
360. Johnson, Mrs. Selma	5.00	
361. Johnson, Edith		
362. Johnson, Mr. and Mrs. Edwin A.		12.00

	1927	1928
363. Johnson, Mr. and Mrs. Gustaf		6.50
364. Johnson, Carl Stanley		1.95
365. Johnson, Mr. and Mrs. Charles V.		8.00
366. Johnson, Carl Norman		1.00
367. Johnson, Mrs. Thilda		
369. Johnson, John A.		
370. Johnson, Maria		
371. Johnson, Esther		1.00
375. Johnson, Mrs. Goran	15.00	
376. Johnson, Rudolph	40.00	
377. Johnson, Martin		
378. Johnson, Einer		
379. Johnson, Peter		
380. Johnson, Carl		
381. Johnson, Olive		
382. Johnson, Mrs. Emma		
383. Johnson, Norma		
384. Johnson, Esther		
385. Johnson, Ruth		
386. Johnson, Bernice		.90
387. Johnson, Hazel		
389. Johnson, Hulda		3.00
390. Johnson, Marvin		.10
391. Johnson, Ruth		.10
392. Josephson, Mr. and Mrs. John A.		8.45
393. Josephson, Arthur		
394. Josephson, Carl		
395. Johnson, Bertil		
400. Johnson, Mrs. John A.	7.00	
415. Karlson, Gustaf Adolf		2.00
416. Karlberg, Mrs. Signie	1.00	1.00
417. Karlberg, Ruth		
418. Karlberg, Harold		
419. Karlblom, Mr. and Mrs. John	25.00	
420. Karlblom, Walter	3.00	
421. Karlson, Mr. and Mrs. Karl Robert		
422. Kittendorf, Edgar		
423. Kjellberg, Mr. and Mrs. J.		
425. Kjellberg, Lawrence	10.00	
426. Kjellberg, Martha		
427. Krantz, Mrs. Carl John		
428. Kranse, Mrs. Edward		1.00
429. Knudsen, Mrs. Willford L.		
430. Knutson, Mrs. Ingrid		
431. Knutson, Mr. and Mrs. Charles		6.50
434. Lundegaarde, Grace		
435. Liden, Mr. and Mrs. Ludwig	1.00	.60
438. Liden, George	.30	1.30
439. Ledman, Mrs. Ada		1.00
440. Ledman, Myrtle	2.00	
442. Lind, Mrs. Anna	.35	.50
443. Linder, Mrs. Emma		
444. Lindquist, Mrs. J. E.	7.00	2.25
445. Lingren, Mrs. Teckla	2.00	3.00
446. Lindmark, Mr. and Mrs. Anton		3.05
447. Lindstrom, Mr. and Mrs. J. E.		
448. Lindvall, Alma		2.00
449. Lindvall, Mildred		
450. Lonngren, Mrs. George		
451. Lunde, Mr. and Mrs. John		5.00
452. Lunde, John		
453. Lunde, George		

	1927	1928
610. Olson, Olle	2.00
611. Osberg, Edward
612. Ost, Mrs. Esther
613. Osterburg, Mildred
614. Osterburg, Margaret
615. Otto, Mrs. Emil
616. Olson, Mr. and Mrs. Lawrence.....	25.00
617. Olson, Mrs. Hannah25
618. Olson, Edith	1.20
619. Olson, Morris85
620. Olson, Ella
621. Olson, Alden
622. Olson, Eona
623. Olson, Mr. and Mrs. Karl A.
624. Olson, Mr. and Mrs. Nels H.	5.00
625. Olson, Doris85
626. Olson, Robert	1.00
627. Olson, Mrs. Ogda
635. Palm, Mr. and Mrs. Richard.....	5.00
636. Parson, Elmer
637. Paulson, Mr. and Mrs. Sven.....	4.00
638. Paulson, LeRoy	2.00
639. Paulson, Raymond	4.50
640. Paulson, Ethel	6.00
641. Paulson, Mr. and Mrs. Fred
642. Paulson, Mr. and Mrs. Vernon.....
643. Paulson, Roselyn
644. Paulson, Earl
645. Pearson, Mr. and Mrs. Charles.....	30.00	5.20
646. Pearson, Martin Hugo
647. Pearson, Mrs. Augusta
648. Pearson, Mr. and Mrs. John D.....
649. Pearson, Mr. and Mrs. Arvid L.....	1.00
650. Pearson, Stanley
651. Pearson, Arvid
652. Person, Mrs. Nannie.....	1.25	8.45
653. Person, Clarence	4.55
654. Persson, Amy
655. Person, Korin
656. Persson, Erick
657. Person, Anna C.	5.00
658. Pearson, Mrs. Ruth.....
659. Peterson, Arthur
660. Peterson, Mr. and Mrs. Walter
661. Peterson, Mr. and Mrs. Albin	6.00
662. Peterson, Ruth
663. Peterson, Mr. and Mrs. P. A.....
664. Peterson, Axel Elof
665. Peterson, Ralph	3.50
671. Quarnstrom, Eleanore	1.20
672. Richter, Mr. and Mrs. John	1.50	5.00
673. Richter, Dagmar	1.20
674. Richter, Ebba10	.90
677. Rodine, Mrs. Anna	1.45
678. Rodine, Esther30	3.90
679. Rodine, Stanley
680. Roland, Donald
681. Rune, Mr. and Mrs. Alfred	30.00
682. Rune, Carl	15.00
683. Rune, Mabel
684. Rune, Harold
685. Ryding, Dorothy

	1927	1928
691. Samuelson, Mrs. Erhart
692. Samuelson, Eleanore
693. Sand, Mr. and Mrs. Carl A.....
694. Sand, Carl
695. Sand, Arthur
696. Sand, Ethel
697. Sandelin, Bertil
698. Sandin, Mr. Robert	5.00
699. Sandin, Gunnar	1.00
700. Schaeffer, Anna
701. Schaeffer, Alma
702. Schaeffer, Helen
703. Schantz, Bernice
704. Schantz, Laurence
705. Seaberg, Mr. and Mrs. A. F.....	63.00
706. Seaberg, Mr. and Mrs. Fredrick	5.00
707. Seaberg, Helen	2.25
708. Seaberg, Ruth	8.00	3.25
709. Seaberg, Mr. and Mrs. Frank.....	6.50
710. Seaberg, Mrs. Johanna.....
711. Seaberg, Mr. and Mrs. Carl F.....	37.95
712. Seaberg, Carl T.	1.65
713. Seberg, Carl Otto	20.00
714. Seberg, Mrs. Clara	15.00
715. Seagren, Mrs. Axel
717. Sherman, Florence.....	1.80
718. Sjogren, Carl Erland
719. Sjogren, Ivar
720. Skoog, Andrew	1.00
722. Skoog, Ethel
723. Skoglund, Elmer
724. Skoglund, William
725. Sorenson, Hazel
726. Stockel, Alice	5.65
727. Stockel, Greta	2.10
728. Sandberg, Mrs. Walter
729. Sundell, Curt
730. Sundstrom, Mr. and Mrs. Peter.....
731. Swanson, Mr. and Mrs. Otto	6.50
732. Swanson, Ernest25	1.35
733. Swanson, Ida	6.00
734. Swanson, Mrs. Helena	1.50
735. Swenson, Cora	15.00
736. Swanson, Emil
737. Sward, Mrs. Florence
740. Starquist, Mrs. Mathilda
741. Tronerud, Mr. and Mrs. Charles M.....	8.25
743. Van Arsdale, Mrs. C. L.....
744. Valles, Mrs. R. A.....40
745. Wahlen, Samuel
746. Wahlen, J. Richard	10.00
747. Wahlen, Adolph	15.00	.40
748. Wahlen, Fridolph	3.50
749. Wahlen, Mr. and Mrs. Claus.....	3.50
750. Wahlen, Mr. and Mrs. Carl.....	3.00
751. Wahlen, Albert
752. Walgren, Mr. and Mrs. J. A.....	6.50
753. Wegman, Mr. and Mrs. Albert.....
754. Wedin, Mrs. Marie	2.00
755. Westberg, Fred	20.00
756. Westberg, Carl F.....
757. Westberg, Ernest

och Guds vilja. Och detta måste för varje kristen bliva det främsta. Det är den timliga tillvarons verkliga lycka och det eviga livets frälsning och salighet. Hur mycken skada ha icke människorna bragt i världen genom att göra sitt namn berömt, genom att i alla stycken genomdriva sin vilja och genom att vilja med våld taga herraväldet över jorden. Den största vishet en människa kan äga är att förtroendefullt och ödmjukt foga sig i Guds vilja.

Till doktor Martin Luther kom en dag en vän och klagade: "Allting går mig emot, mina önskningar gå ej i uppfyllelse, mitt hopp kommer på skam, mina planer bliva om intet." "Käre vän", svarade Luther, "därtill är du själv skuld." "Jag, skulle jag vara skuld därtill?" "Ja, du", sade Luther; "varför ber du alla dagar till Gud: Ske din vilja? Måste hellre bedja: Ske min vilja! Så länge du ber, att Guds vilja måtte ske, så länge måste du också lugnt fördraga, att han gör efter din bön."

Din hand.

Du går inte ensam vägen fram. Det är trängsel på livets allfarväg och stackare den, som snubblar eller inte vet, vart färden bär.

Någon trampar dig eller råkar knuffa till din arm. Knyt inte handen åt honom. Han kunde inte annat, ty det var så trångt.

Din hand kan bringa mycken hjälp och utföra nyttigt arbete.

Du kan smeka en liten pojke med handen, men också tukta eller miss-handla honom.

Till välsignelse lyftes handen, men kan också knytas i vrede och harm. Den är bärare av själens känslor och kan tala utan ord.

Handen talar högt och tydligt om för all världen, ifall hon tillhör en ordningens och renhetens vän, en hederlig arbetsmänniska, en lätting eller en oärlig man. Det hjälper inte att skyla sitt ansikte, ty handen, som håller täckelset, talar om, vad vi ville dölja.

Men det hjälper att bliva en god och helgjuten människa, ty om din karaktär förädlas, så skall även din hand härav taga intryck. Ty handen är ett själens verktyg och hjälpmedel.

Rätta Guds arbetare.

Tron icke, att I behagen Gud genom att övergiva eder jordiska kallelse och endast tjäna det andliga. Gud har skapat oss med kropp och själ och satt oss i en jordisk värld, för att vi där skola leva och arbeta, oss själva och våra bröder till gagn och glädje. Den, som försummar sin jordiska kallelse för att endast tjäna det himmelska, han är lik en man, som lägger eld under en torr gryta. Det blir mycken hetta men ingen näring, och slutligen går t. o. m. själva grytan sönder. Gån därför var och en av eder och utfören edert arbete i trohet! Låten icke Guds ords eld brinna under en torr gryta! Arbeten varje dag och bedjen till eder Gud varje kväll, när allt är stilla omkring eder; då fån I en god natt och en glad uppståndelse till den morgon, som kommer.

Sålunda bliva vi alla rätta Guds arbetare på jorden.

HANS NIELSEN HAUGE.

Minnet är som ett fisknät, något behålles, något går igenom.

Ingenting är ledsammare än idel nöjen, och ingen har större behov av dem än just den, som har mest av dem.—*Geikie.*

Döden blåser ej i lur för sig.

Our stock of *FOOTWEAR* embraces the latest styles at reasonable prices. Expert shoe fitters and quality merchandise.

KARLSON SHOE CO.

6040 S. HALSTED ST. Sydsidans ledande svenska skoaffär

TELEPHONES: WENTWORTH 3200 - 3201 - 3202

Phone Us Your orders for House, Lodge and Church Parties

Supreme Flavor. Absolute Purity

Rainbow Ice Cream Co.

WALTER H. McCOY, Pres. and Mgr.

F. J. LEHR, Sec'y-Treas.

809=811 W. 58th St.

Chicago, Ill.

C. H. Hageman
6433 So. Lincoln St.
Republic 4271

Claus Johnson
7729 East End Ave.
Saginaw 2406

HAGEMAN & JOHNSON

General Contractors

Estimates Furnished

CARPENTRY & MASONRY

Chicago, Ill.

COAL COAL COAL COAL COAL

L A O C

Our Guarantee If any load that leaves our yard is reweighed and found short-weighted, barring a slight discrepancy that might be caused by different scales used, we will make you a present of the load and contribute \$100 to any charitable institution you may designate.

WE ALSO SELL PAINTS, VARNISHES and BUILDING MATERIALS

STANDARD MATERIAL CO.

Phones: Went. 0240-0241

66th Street and Lowe Avenue

COAL COAL COAL COAL COAL

L A O C



*The Glow
of Health*

Pure fresh milk
builds sturdy
active bodies —



WANZER'S MILK

Sidney Wanzer & Sons
Established 1857

70th ANNIVERSARY YEAR

Patronize
Our Advertisers

Phone: Wentworth 1106

Anderson & Osterholm Co.

Painters and Decorators
Wall Paper and Painters' Supplies
1102—1104 W. 59th St. Chicago
Bok och Pappershandel samt
ångbåtsbiljettkontor
812 W 59th Street.

Där ett stort lager av böcker, musik och
importerade svenska varor finnes. Kuriko
och Ole Oid ständigt på lager.

EMIL PETERSON

Tel. Englewood 1622

Englewood Hat Shop

Phone: Eng. 3817 935 W. 59th St.

Auburn Hat Shop

Phone: Stewart 331 810 W. 79th St.
E. BOSTROM E. LINDBERG

When buying of our
advertisers please men-
tion this paper.

Dr. E. VINJE

Tandläkare

1025 West 59th Street

Phone Wentworth 1627.

Cor. Carpenter St. Chicago, Ill.

Stafford Studio

750 W. 69 St. Ground Flour

Phone: Normal 1016

Open Sundays—1 to 4:30 p. m.

Beautiful Boquet for Wedding Pictures

For good things to eat

Colby's Market House

is the place.

6753 So. Halsted St. Phone Went. 0907

"The Busy"

926 West 63rd Street

For GOOD CLOTHES Call on

M. L. CO.

MUSSER-LORENZ COMPANY

63 & Halsted Sts. Phone Englewood 2808
WE CLOTHE MEN AND BOYS

Candy-Land

Has the best Candy and
Ice Cream. Try Them

6304 SO. HALSTED ST.

M. A. Rosenlund

PRINTING and PUBLISHING

Honest Work - Reasonable Prices
Printing done in Swedish or English

Phone: Normal 8083

909 W. 59th St. - Chicago, Ill.

Phone Res. 6747 Lafayette Ave.
Wentworth 3855 Phone Normal 871

ART HAAS

FLORIST

All sorts of Blooming Plants.

Funeral Designs a Specialty. Landscape Gardening.
914 W. 63rd St. Chicago, Ill.

Capitol Dairy Co.

MILK, CREAM and BUTTER

Phones, Boul. 0376, 0377, 0378

4322-34 So. Wabash Avenue

Phone: Went. 4781.

Dr. A. F. Johnson

— DENTIST —

5858 Halsted St. 910 W. 59th St.
N. W. Corner Halsted St. Chicago

Dr. W. B. Winget

DENTIST

719 W. Sixty-Third Street, Chicago
Room 5, Stratford Building

Phone-- Between Halsted
Wentworth 1817 and Union

Phone Wentworth 246

C. A. Londelius & Sons Co.

PAINTS AND HARDWARE

847 W Sixty-Third St.,... Chicago
Public Garage, 6241—47 Peoria St.
Phone: Wentworth 4530

N. J. WIDEN

SWEDISH HOME BAKERY

1034 W. 59th St. Chicago

PRONE NORMAL 7968

—PHONES—
Res.: Wentworth 6391. Office: Wentworth 921

E. Bernhard Anderson M. D.

Physician and Surgeon

300—304 W. Sixty-third Street

ANNOUNCES

CHANGE OF OFFICE HOURS
TO

1 to 3 P. M. Daily
Evenings: 7 to 8, except Tuesdays and Fridays

Chas. J. Dahlgren

Telephone: Went. 657

Undertaker & Embalmer

5820 Wentworth Ave. - Chicago, Ill.

Fine Equipments.

POTTED PLANTS CUT FLOWERS

Haarlow & Jacobsen

FLORISTS

Conservatories & Greenhouses

We Deliver in any Part of City.

Funeral Designs a Specialty.

Wedding Bouq. Palm Decorations

Phone Yards 0333.

5325-31 S. Morgan St.

Walter Swanson

Quality Fish and Oysters

Crawfish and Imported Can Goods,
Herring, Cheese. Etc.

1038 W. 59th St.

Phone Normal 1533.

A NEW BOOK!

BIBLICAL PEDAGOGY

A hand book by Dr. E. F. Bartholomew for
Sunday School teachers and Bible students.

In attractive cloth binding
90 cents

AUGUSTANA BOOK CONCERN

Rock Island, Ill.

Minneapolis Branch: 405 Fourth Ave. S.

TRADE WITH
ANDERSON & JENSEN

DRY GOODS, CLOTHING AND SHOES

5902-5910 . Halsted St.

Phone Wentworth 811

Save A & J Chicago Trading Stamps. A stamp with every 10c purchase

GO TO

Folkie Bros.

1019-1023 W. 59th Street

For Your SPRING Furnishing of
 Dry Goods, Men's Wear and Shoes.

Suits and Overcoats

Our Fall Stock is complete. Real Values are shown

AT

\$25.00 to \$50.00

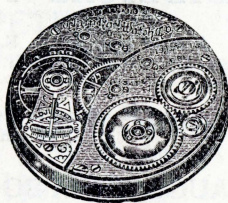
JOHN S. RYDELL & CO.

Established 1872

6107-13 S. HALSTED ST.

ELLIS BERN
JEWELER & OPTICIAN

We give most careful attention to repairing and highest class of workmanship assured
 7532 Cottage Grove Ave., Chicago.



Telephone Englewood 4876

ENGLEWOOD CUT GLASS & CHINA CO.

Not Inc.

Dealers in

Colored Glass Silverware
 Imported and Domestic China
 VICTOR GUSTAVSON, Prop.

6431 S. Halsted Street.

1994/95: 4AF